

Anesthesia Workstation Installation and Service Guide

67-2022 Rev D



This guide is CONFIDENTIAL and designed only for Omnicell Technical personnel and/or designated representatives.

This guide and accompanying software and/or hardware described in it are protected under copyright laws and may not be copied, wholly or in part, without the express written consent of Omnicell, Inc. The same proprietary and copyright notices must be attached to any permitted copies as were attached to the original documents.

Omnicell, Inc.
1201 Charleston Road
Mountain View, CA 94043
(650) 251-6100
www.omnicell.com

Omnicell and the Omnicell design mark, OmniBuyer, OmniCenter, OmniRx, OmniSupplier, SafetyMed, SafetyPak, SafetyStock, and Sure-Med are registered trademarks. Anesthesia TT, Anesthesia Workstation, Anywhere RN, Executive Advisor, Flexbin, Medication Surveillance, OmniDispenser, OmniLinkRx, OmniScanner, OmniTrack, Omni TT, Open Touch, OptiFlex, OptiFlex MobileTrack, Point-to-Point Medication Safety, SecureVault, See & Touch, SinglePointe, TempCheck, Touch & Go, VSuite, and WorkflowRx are trademarks of Omnicell, Inc. in the United States and internationally. All other trademarks and trade names are the property of their respective owners.

Copyright 2010 Omnicell, Inc. All rights reserved.

Table of Contents

Electronics Tray	1-1
Introduction	1-1
Tools List	1-1
Removal Procedure	1-1
AWS Cover	1-1
Electronics Tray	1-2
Replacement Procedure	1-5
PowerCom3 CT PC Tray	1-5
Cables	1-6
 Frames and Wireways	2-1
Introduction	2-1
Tools List	2-1
Wireway Access	2-1
Bumpers	2-5
Removal Procedure	2-5
Replacement Procedure	2-6
Manual Override Cable	2-7
Removal Procedure	2-7
Replacement Procedure	2-10
Transport Handles	2-11
Front Transport Handle	2-11
Side Transport Handle	2-12
 LCD Bezel Assembly	3-1
Introduction	3-1
Tools List	3-1
LCD Bezel Assembly	3-1
Removal Procedure	3-1
PS2 Keyboard Removal	3-4
Potentiometer Removal	3-9
USB Keyboard Removal	3-10
Replacement Procedure	3-12
Potentiometer Replacement	3-12
PS2 Keyboard Replacement	3-13
USB Keyboard Replacement	3-13
Touchscreen/Bezel Replacement	3-14
Keyboard Retrofit	3-14

Printer	4-1
Introduction	4-1
Tools List	4-1
Removal Procedure	4-1
Seiko Printer	4-1
APS Printer	4-5
Replacement Procedure	4-8
Seiko Printer	4-8
APS Printer	4-9
Retrofit Procedure	4-9
Seiko Module Removal	4-9
APS Module Installation	4-11
 Drawers	 5-1
Introduction	5-1
Tools List	5-1
Removal Procedure	5-1
Dividers	5-4
Replacement Procedure	5-4
Cabinet Configuration	5-5
Scanner Check	5-8
 Peripheral Devices	 6-1
Introduction	6-1
Tools List	6-1
Work Surface Light	6-1
Removal Procedure	6-1
Replacement Procedure	6-3
IV Pole	6-4
Removal Procedure	6-4
Replacement Procedure	6-5
Auxiliary Fold-out Shelf	6-6
Removal Procedure	6-6
Replacement Procedure	6-7
Tilt Bin Organizer	6-8
Removal Procedure	6-8
Replacement Procedure	6-9
 Appendix A: Parts	 A-1
Part Link Table	A-1
 Index	 IN-1
 Documentation Feedback	 FB-1

Electronics Tray

Introduction

This section provides detailed instructions for the proper removal and replacement of the Anesthesia Workstation electronics tray.

Tools List

The following tools are required to install the electronics tray:

- T8 Torx Driver
- T10 Torx Driver
- T15 Torx Driver
- 9/64" Allen wrench
- #2036

Removal Procedure

AWS Cover

1. Perform a graceful shutdown of the AWS.
2. Turn the LCD bezel and keyboard assembly to the left (clockwise) before removing the cover.
3. Unlock the cam lock on the front of the AWS with the #2036 [key](#).



Figure 1-1. Unlock the cam lock that secures the AWS lid

4. Lift the [cover](#) and pull it away from the machine.



Note: The plastic cover is heavy because a metal plate is screwed to the underside of the cover.



Caution: If the lid is allowed to be dragged across the top of the anesthesia, the LCD Data Cable could be damaged.

5. Remove the cover from the top of the Anesthesia Workstation.

Electronics Tray

1. Perform a graceful shutdown of the cabinet software, then power down the cabinet and disconnect the machine from the wall outlet.
2. Disconnect the LAN and AUX cables from the rear of the CT PC Box.

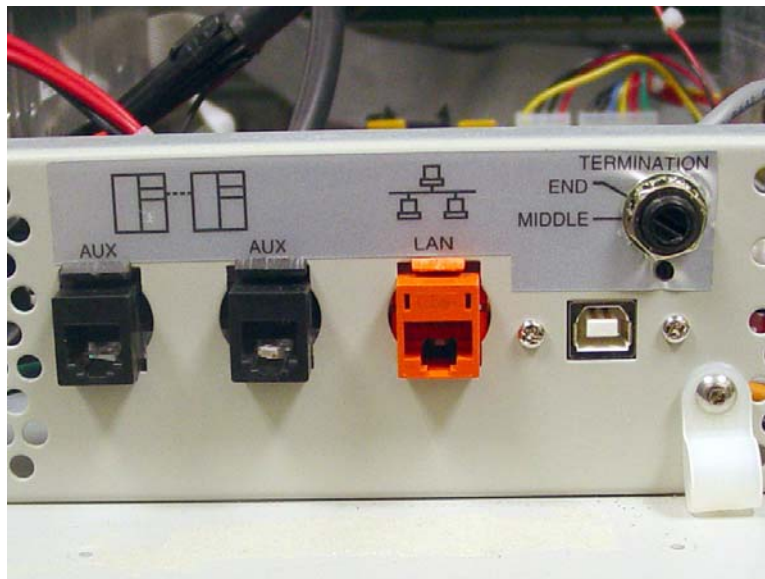


Figure 1-2. Location and labels for LAN and AUX cable connections on CT PC Tray

3. Disconnect the following cables (from tray only):
 - a. LCD data cable
 - b. Contrast cable
 - c. Inverter (backlight) cable
 - d. Touch screen data cable
 - e. Keyboard cable
 - f. Speaker cable
 - g. Card reader cable (if applicable—not shown)
 - h. Fan power cable (if applicable)
 - i. Printer cable (free cable from any clips)
 - j. Cabinet power/comm cable

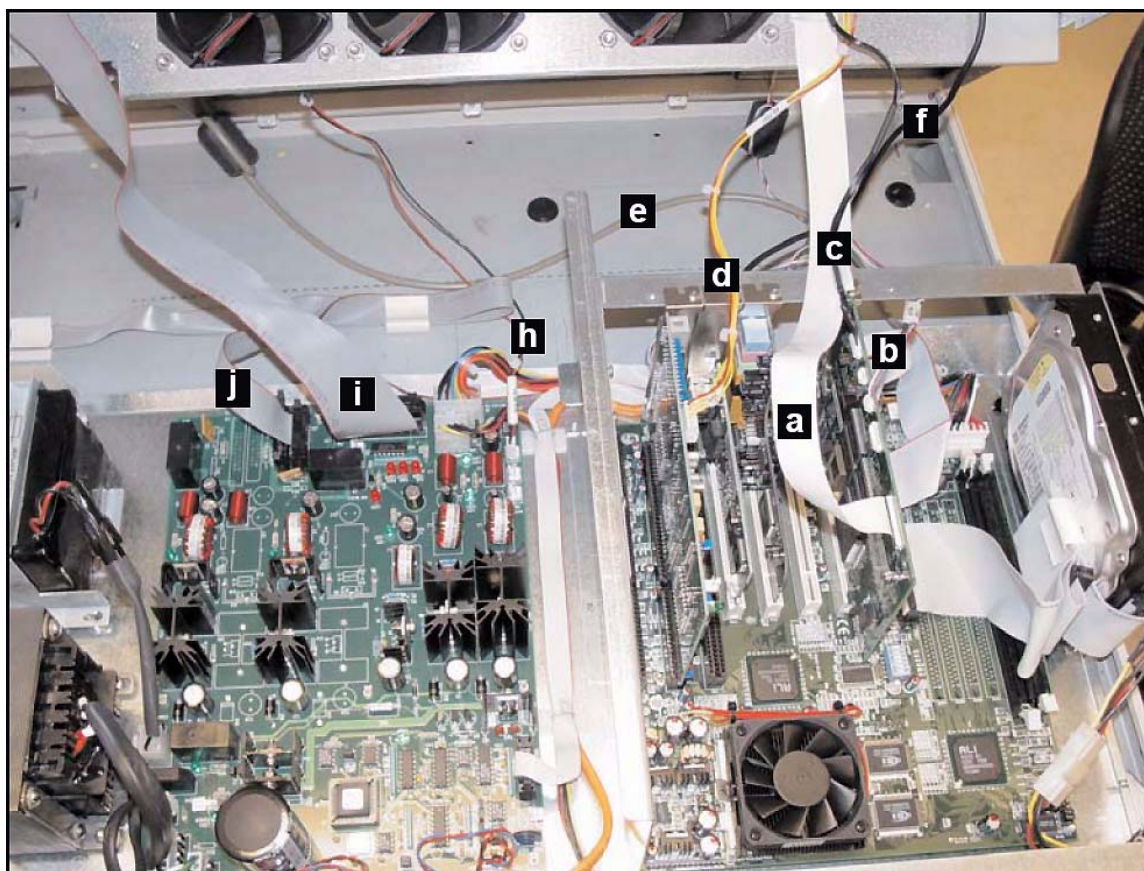


Figure 1-3. Location of cables on the CT PC Tray with PowerCom2 Board

4. Turn the two **fasteners** that secure the electronics tray a quarter turn counter-clockwise to unlock.

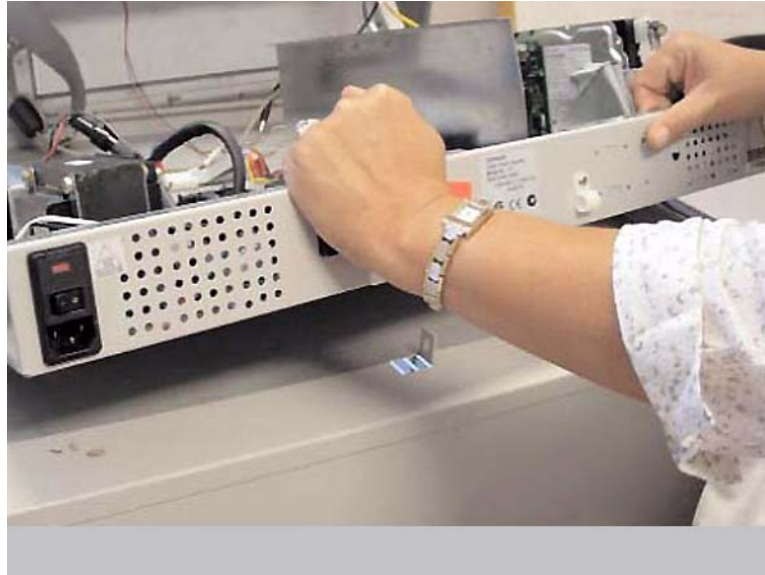


Figure 1-4. Lift and remove the CT PC Tray with from the Anesthesia Workstation

5. Lift the front edge of the tray over the two standoffs and pull the tray forward.
6. Lift the rear of the tray and twist slightly until the front tabs clear the frame.
7. Remove the **electronics tray**.

Replacement Procedure

PowerCom3 CT PC Tray

1. Place the [PowerCom3](#) electronics tray into the cabinet. Place the rear of the tray in first and lower until it touches the back of the tray.

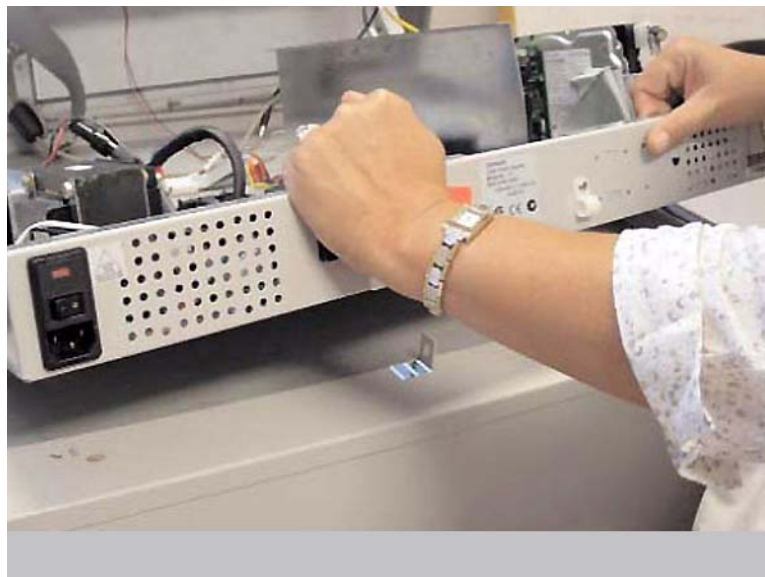


Figure 1-5. Place the CT PC Tray into the AWS

- a. Ensure the front of the tray clears the frame of the tray and set the tray down.
- b. Secure the tray onto the standoffs.
- c. Turn the two fasteners that secure the electronics tray clockwise to lock the tray into place.

Cables

1. Connect the wireway cable to the J10 of the PowerCom3 Board

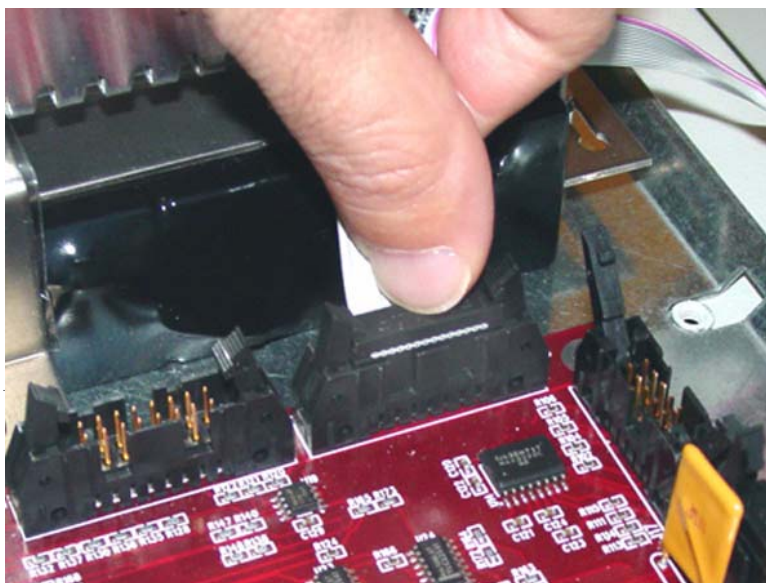


Figure 1-6. Connect the Wireway Cable to J10 of the PowerCom3 Board

2. Connect the printer cable to J27 on the motherboard.

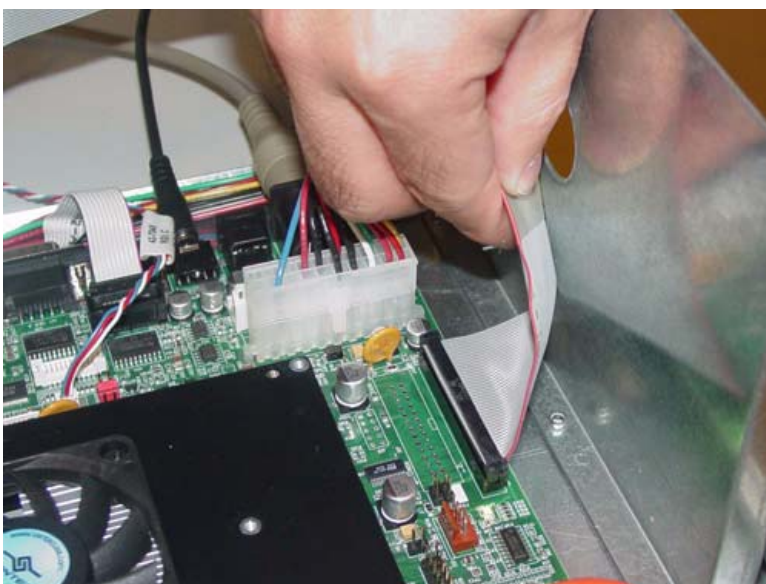


Figure 1-7. Connect the Printer Cable to J27 of the Motherboard



Note: Ensure that the red wire is connected closest to Pin 1.

3. Connect the fan power cable to J17 on the UPS board (if applicable).

4. Connect the speaker cable to port J45 on the motherboard.

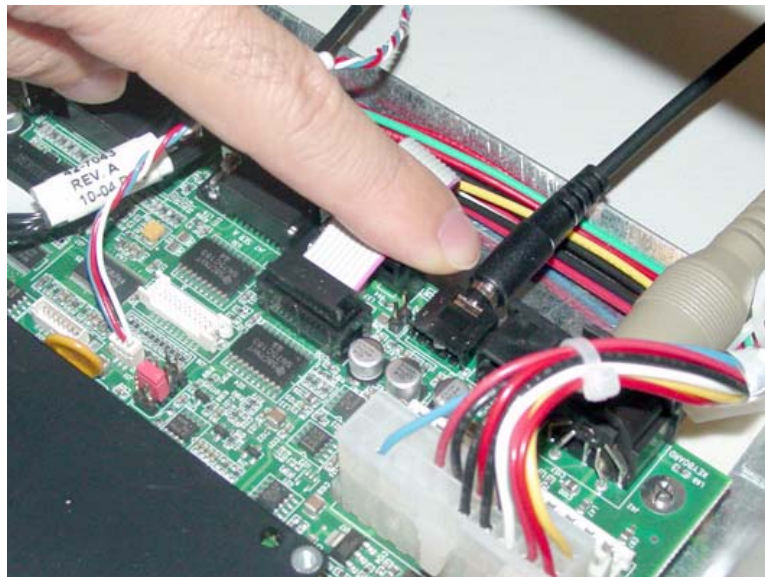


Figure 1-8. Connect the Speaker Cable to J45 of the Motherboard

5. Connect the keyboard cable to port J42 on the motherboard.

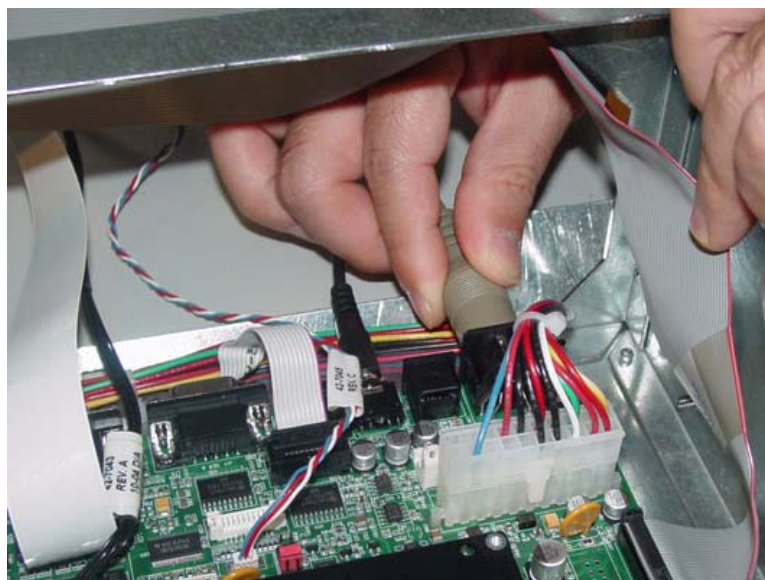


Figure 1-9. Connect the Keyboard Cable to J42 of the Motherboard

6. Connect the touch screen data cable to J2 on the motherboard:
 - a. Connect the extension cable provided in the kit to the touch screen data cable (red wire to red wire).
 - b. Wrap the joined connectors with electrical tape to ensure that the cables do not become disconnected.
 - c. Connect the touch screen data cable extension to J2 on the motherboard.

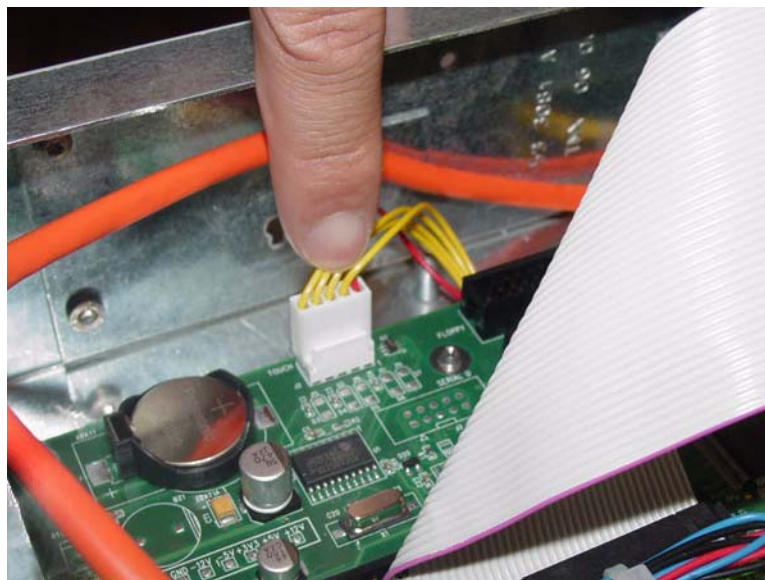


Figure 1-10. Connect the Touch Screen Data Cable to J2 of the Motherboard

7. Connect the inverter cable (backlight) to J32 on the motherboard.

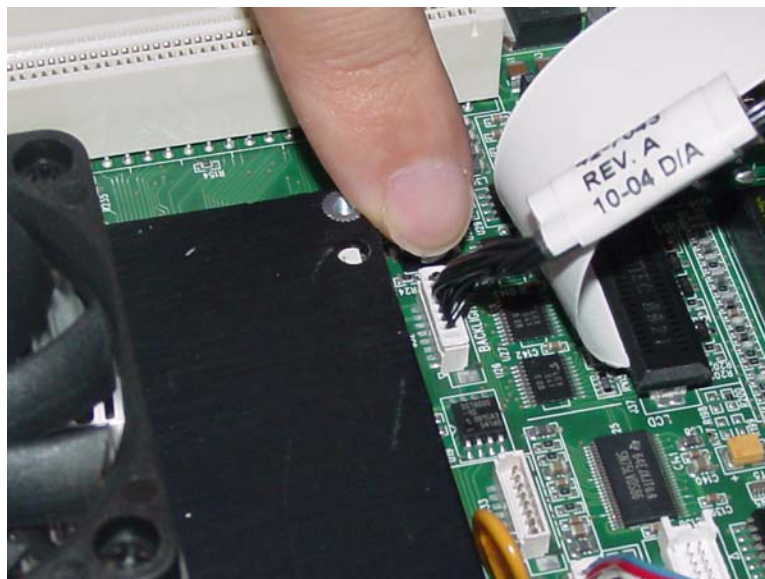


Figure 1-11. Connect the Backlight Cable to J32 of the Motherboard

8. Connect the contrast cable to J31 on the motherboard.

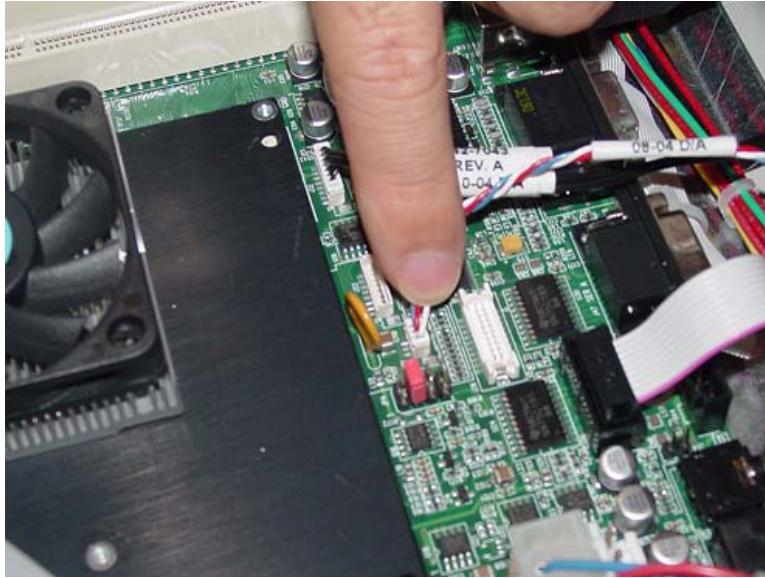


Figure 1-12. Connect the Contrast Cable to J31 of the Motherboard

9. Connect the LCD data cable to J37 on the motherboard

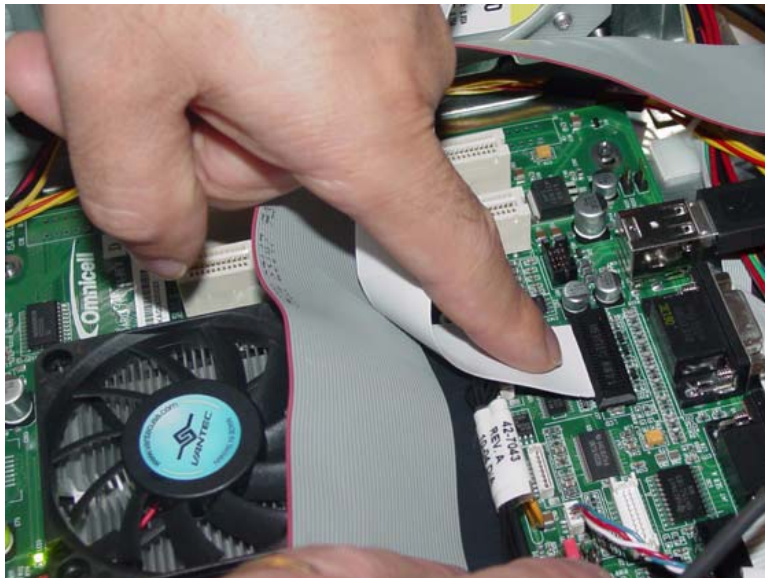


Figure 1-13. Connect the LCD Data Cable to J37 of the Motherboard

10. If a card reader is present and needs to be reconnected:
 - a. Connect the card reader serial cable to J47 on the motherboard.
 - b. Connect the card reader power cable to the back of the card reader serial connector.
 - c. Insert card reader power cable pins into the disk drive power connector.
 - d. Align the red-stripe pin to the red cable and the gray-stripe pin to the gray cable in next spot.

Frames and Wireways

Introduction

The Anesthesia Workstation comes with features to help secure, protect and reinforce the cabinet. Those features include:

- Front and side moving bars
- Front, side, and rear bumpers

Tools List

The following tools are required to repair/replace the frames and wireways:

- T8 Torx Driver
- T10 Torx Driver
- T15 Torx Driver

Wireway Access



Important: A Pharmacist must be present when servicing drawers where medications are present.

1. Perform a graceful shutdown of the Anesthesia Workstation.

2. Unlock the two locks on the manual override cover with the [override keys](#).



Figure 2-1. Unlock the two locks from the manual override cover

3. Slide the [manual override cover](#) to the right and remove it.
4. Remove all the drawers from the Anesthesia Workstation. For help, please refer to “[Removal Procedure](#)” on page 5-1.



Figure 2-2. Remove the drawers from the AWS

5. Remove all drawer rails by removing the two screws that secure the rail to the frame.

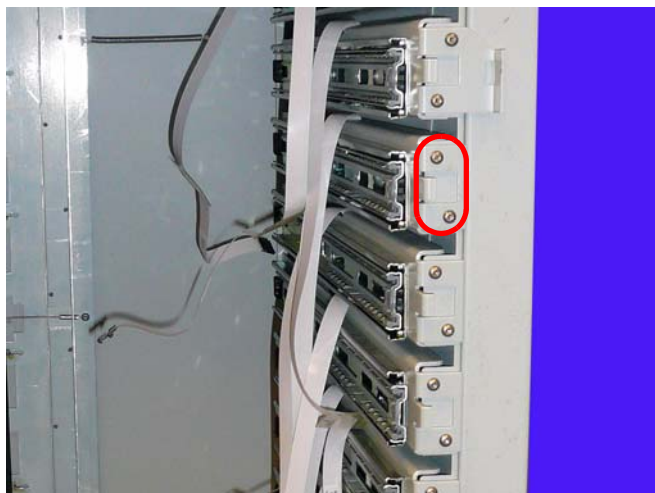


Figure 2-3. Remove the drawer rails

6. Remove the two screws on the front of the frame that help secure the wireway.

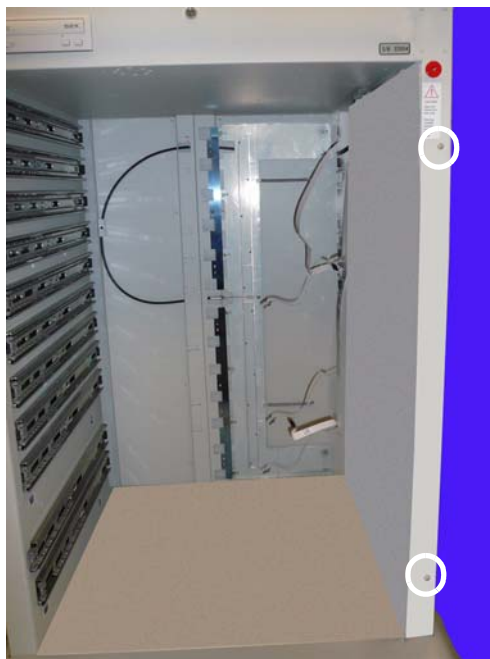


Figure 2-4. Remove the two wireway screws on the front of the AWS

7. Remove the three screws on the side of the frame that secure the wireway.



Figure 2-5. Remove the wireway screws on the side of the AWS

8. Pull the wireway far enough from the frame to access the SPC board connectors.
9. Disconnect the cables on top and bottom that connect the SPC board to the wireway.



Figure 2-6. Remove the ribbon cable and remove the SPC board from the wireway

10. Remove the SPC board from the wireway.

Bumpers

Removal Procedure

The bumpers on the Anesthesia Workstation are designed to help protect the frame of the AWS. The bumpers are also designed for easy release and replacement as they are secured to the frame of the AWS with torque screws that are easy to operate without use of specialty tools.



Figure 2-7. AWS Bumper torque screws

1. Twist and unlock the seven torque [screws](#) on the front bumper.
2. Remove the [front bumper](#).

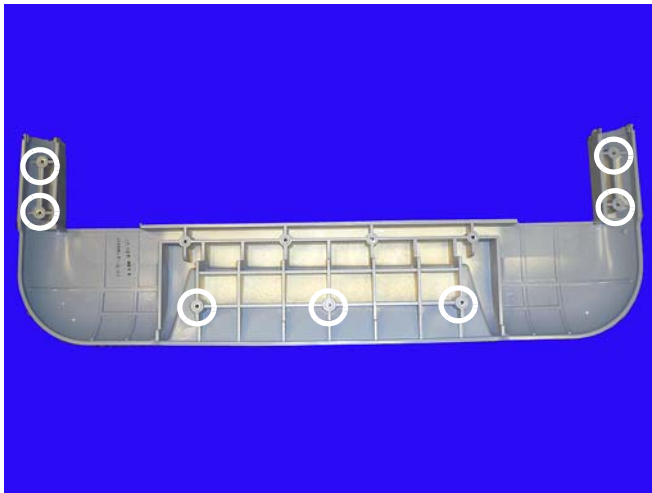


Figure 2-8. Remove the front bumper

3. Twist and unlock the three **screws** on each of the side bumpers.



Figure 2-9. Remove the side bumper

4. Remove the **side bumpers**.

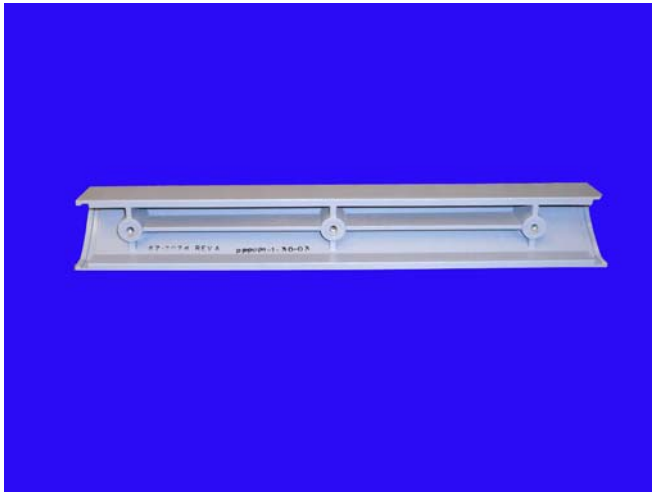


Figure 2-10.

5. Twist and unlock the seven **screws** securing the rear bumper.
6. Remove the **rear bumper**.

Replacement Procedure

1. Line up the rear bumper on the AWS frame and replace the seven torque screws that secure the bumper to the frame.
2. Line up the two side bumpers and replace the three screws that secure each side bumper to the AWS frame.
3. Line up the front bumper on the AWS frame and replace the seven torque screws that secure the bumper to the frame.

Manual Override Cable

Removal Procedure

1. Perform a graceful shutdown of the electronics sled.
2. Unlock then remove the cover of the AWS.
3. Remove all drawers from the AWS cabinet. For help, refer to [“Removal Procedure”](#) on page 5-1.
4. Push the platen lever toward the frame to release the paper.



Figure 2-11. Push the platen lever toward the frame to release the paper

5. Remove the [thermal printer paper](#) and [spool](#).

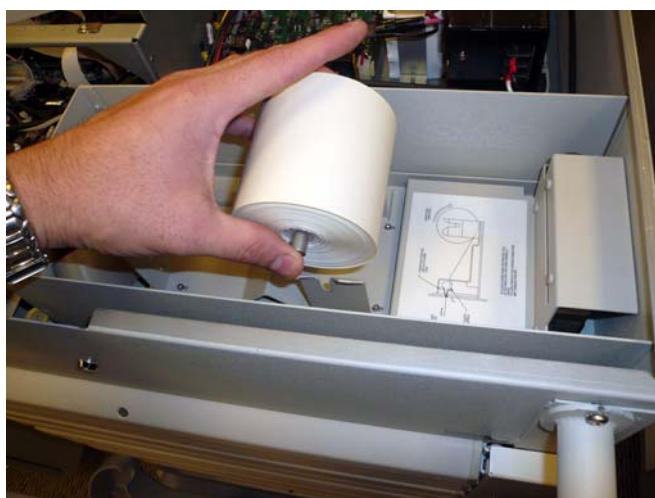


Figure 2-12. Remove the paper and spool from the printer enclosure

6. Disconnect the [printer ribbon cable](#) from the motherboard.
7. Remove the electronics tray. For help, refer to [“Electronics Tray”](#) on page 1-2.
8. Slide the printer drawer out of the frame as far as it can go.

9. Press the release lever under the drawer to remove it from the rail.
10. Remove the six screws that secure the printer carrier to the AWS frame.

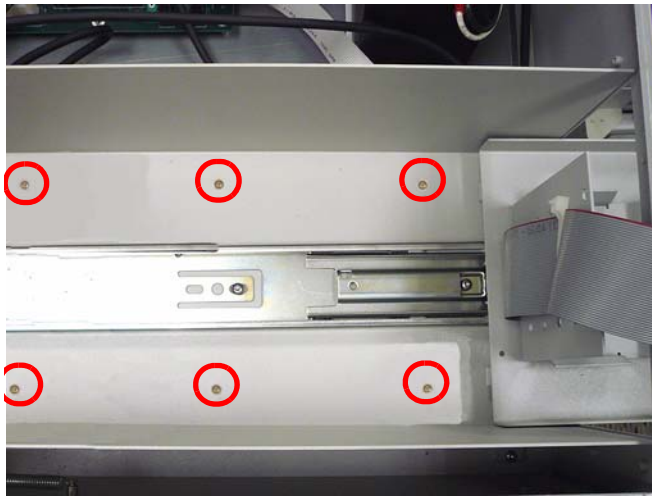


Figure 2-13. Remove the screws that secure the printer enclosure to the AWS frame

11. Remove the printer carrier.
12. Loosen the two nuts that secure the manual override cable in the back of the frame.
13. Remove the red handle on the front of the manual override cable.



Figure 2-14. Remove the red handle on the manual override cable

14. Remove the **nut** that secures the manual override cable to the front of the frame.



Figure 2-15. Remove the nut that secures the manual override cable to the frame.

15. Remove the **screw** that secures the manual override cable to the manual override assembly.



Figure 2-16. Remove the screw that secures the cable to the manual override assembly.

16. Loosen the **nut** that secures the cable to the back of the frame.



Figure 2-17. Loosen the nut that secures the cable to the frame anchor

17. Pull the cable from the anchor on the back of the frame.
18. Pull the cable out from inside the AWS cabinet.

Replacement Procedure

1. Feed the cable into the AWS cabinet.
2. Tighten the nuts that secures the cable to the back of the frame.
3. Feed the front of the manual override cable through the hole on the front of the AWS cabinet.
4. Replace the nut that secures the cable to the front of the frame.
5. Replace the red handle.
6. Replace the two screws that secure the manual override cable to the inside of the front of the frame.



Note: The drawer must be removed from a new printer enclosure before installing it.

7. Install the new printer carrier which already has the drawer rail secured.
8. Slide in the drawer.
9. Replace the thermal printer paper and the spool.
10. Replace the electronics sled and reattach all cables that had been removed.
11. Close the lid to the electronics tray.
12. Feed the printer paper through the printer.
13. Power up the AWS cabinet.

Transport Handles

The Anesthesia Workstation features front and side transport handles designed to help the customer easily navigate the AWS on its casters.

Front Transport Handle

1. Remove the two [screws](#) on the outside of the frame on either side of the front transport handle.

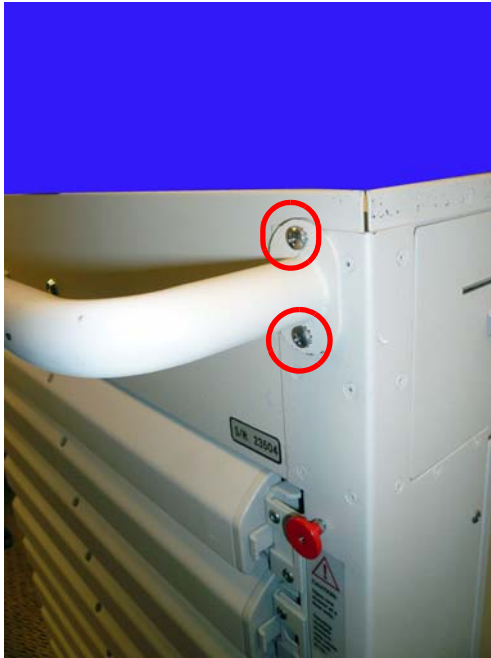


Figure 2-18. Remove the two screws that secure the front transport handle to the AWS frame

2. Remove the [front transport handle](#).
3. Replace the transport handle by lining up the new front moving bar with the screw holes, then insert/tighten the screws.

Side Transport Handle

1. Remove the **screw** that secures the side transport handle to the outside of the AWS frame.



Figure 2-19. Remove the screw that secures the side transport handle to the frame.

2. Remove the **screw** that secures the side transport handle to the inside of the AWS frame.



Figure 2-20. Remove the screw that secures the transport handle to the inside of the frame

3. Remove the **side transport handle**.
4. Replace the side transport handle by lining up the screw holes (inside/outside), then insert/tighten the screws.

LCD Bezel Assembly

Introduction

This section provides the sequence of part removal for all replaceable parts within the LCD bezel assembly. Some parts need to be removed, even if they are not being replaced, to access other parts.

New anesthesia workstations (AWS) now have the USB keyboard. The service instructions in this chapter cover the removal and replacement of the old (PS2) and new types of keyboards. Each keyboard type will be replaced with the same type until the old PS2 type supplies run out. At that time the PS2 keyboard will need to be replaced by the USB keyboard.

Tools List

The following tools are required to install/repair the LCD Bezel Assembly:

- T8 Torx Driver
- T10 Torx Driver
- T15 Torx Driver
- Needle-nose Pliers

LCD Bezel Assembly

Removal Procedure

1. Perform a graceful shutdown of the AWS, then unplug the power cable.
2. Pivot the LCD assembly to the left (clockwise).



Figure 3-1. Pivot the LCD Assembly clockwise

3. Remove the sixteen **screws** from the rear LCD housing using a T10 Torx driver.



Note: Hold the LCD Bezel while removing the screws to ensure that it does not fall and become damaged.



Figure 3-2. Remove the screws securing the housing

4. Pull back the **LCD housing cover** and lift out from the collar.



Figure 3-3. Pull back the LCD housing cover



Note: Older monitors have three cables (two video control and a buffer cable). They are replaced (if needed) with a newer model that has three different cables (inverter, touch pad, LCD).

5. Disconnect the three cables.
 - Old monitor: video control (2), reach buffer board
 - New monitor: inverter, touch pad, LCD

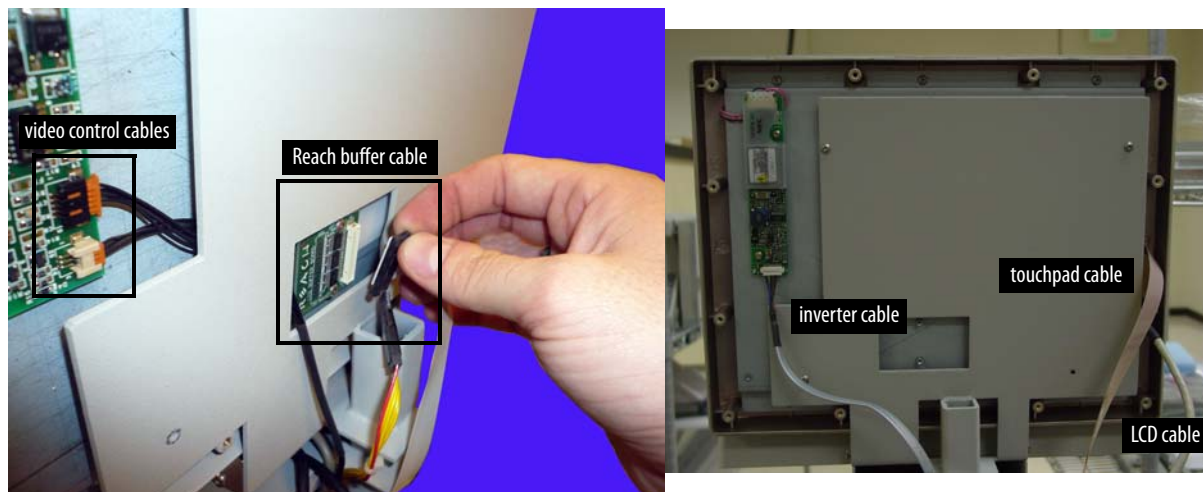


Figure 3-4. Disconnect the cables—old (left) /new (right) monitor

6. Remove the four T10 screws securing the metal support plate.



Important: Be sure to place a hand on the metal plate to hold it in place while removing the screws, or the LCD display may fall out of the housing.



Figure 3-5. Remove the screws securing the metal housing plate

7. Lift the LCD screen and remove it from the bezel assembly.



Note: Be sure to set the LCD on a clean, flat surface with the screen face up.

8. Remove the touch screen glass from the LCD frame.



Important: Do not touch the inner surface of the touch screen glass as this could prevent the touch screen from working properly when re-installed.

Carefully pick up the touch screen glass by the sides when moving it.

9. Disconnect the touch screen [data cable](#).

PS2 Keyboard Removal

1. Unlock the cam lock on the front of the AWS with the #2036 [key](#).



Figure 3-6. Unlock the cam lock that secures the AWS lid

2. Lift the [cover](#) and pull it away from the machine.



Caution: If the lid is allowed to be dragged across the top of the anesthesia, the LCD Data Cable could be damaged.

3. Remove the keyboard cable from the motherboard.

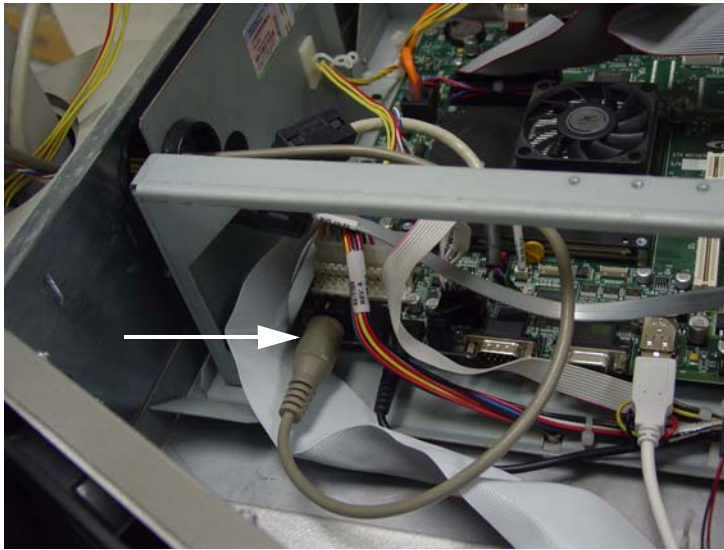


Figure 3-7. Remove the keyboard cable from the motherboard

4. Remove the eight Torx screws from underneath the keyboard base plate. Use a Torx T-10 driver.



Figure 3-8. Remove the screws securing the keyboard housing

5. Lift the keyboard and **bezel** and turn them over, resting the keyboard face down on the keyboard table.

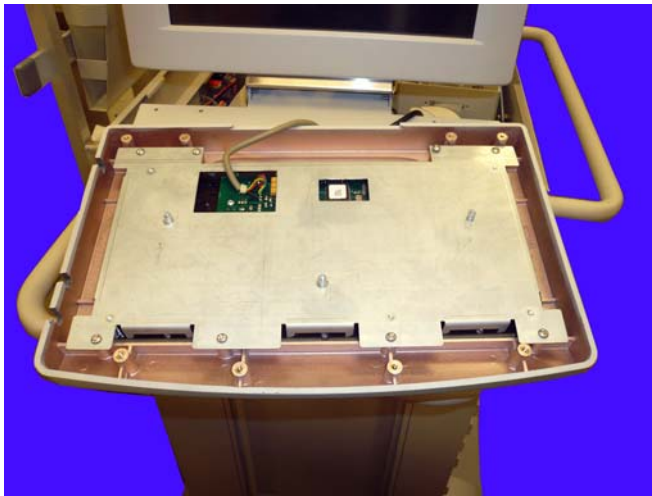


Figure 3-9. Flip the keyboard over and place it on the keyboard table

6. Remove the eight Torx **screws** that secure the metal support plate to the keyboard bezel.



Figure 3-10. Remove the screws that secure the keyboard bezel

7. Lift the metal support plate.



Figure 3-11. Lift the metal plate

8. Remove the keyboard connect board from the keyboard.

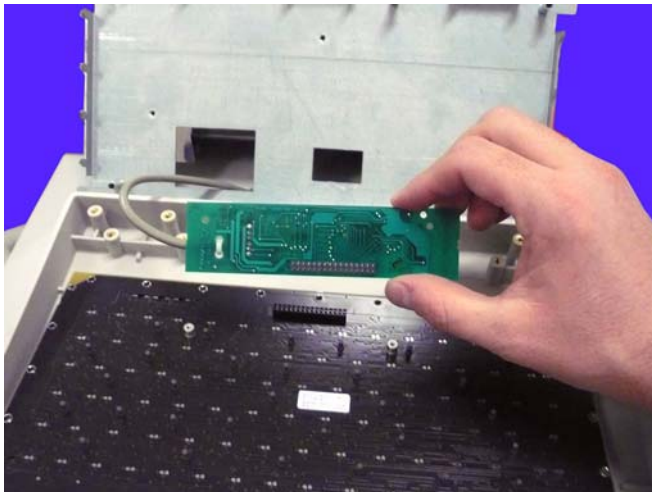


Figure 3-12. Remove the keyboard connect board

9. Remove the keyboard.



Figure 3-13. Remove the keyboard

10. Lift and separate the elastomer from the keyboard frame.



Figure 3-14. Remove the elastomer

11. Unthread the keyboard cable through the console bezel.

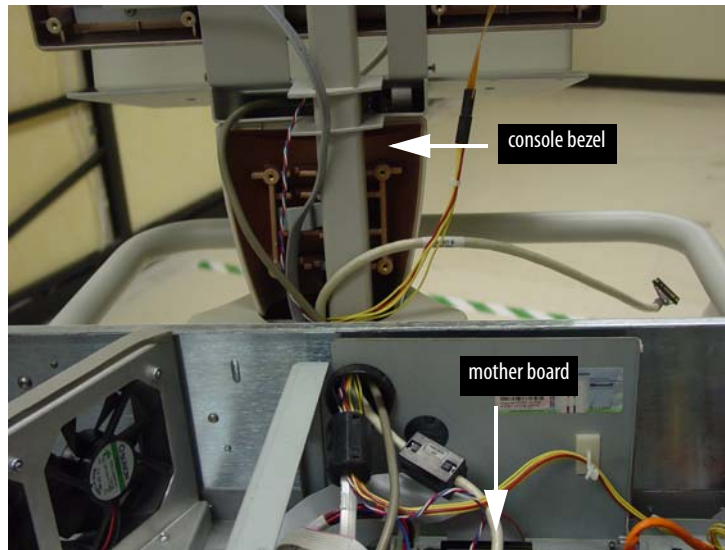


Figure 3-15. Console bezel

Potentiometer Removal

Potentiometer removal is performed after the keyboard bezel is removed from the keyboard base plate.

1. Disconnect the red, white, and blue **contrast cable** from the motherboard.

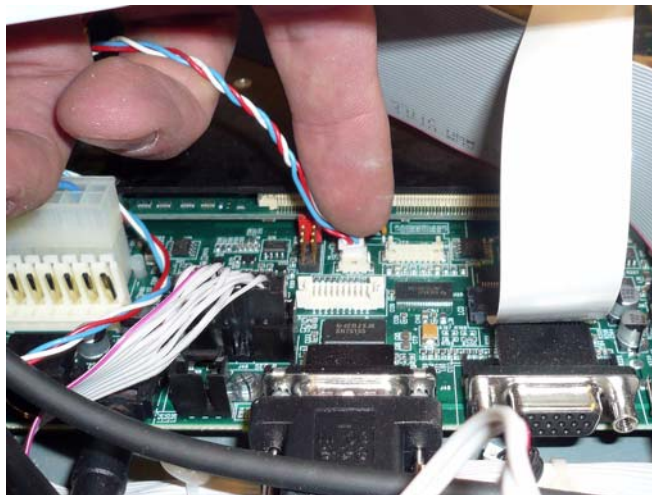


Figure 3-16. Disconnect the contrast control cable from the motherboard

2. Remove the two **screws** securing the contrast potentiometer knob.



Figure 3-17. Remove the screws securing the potentiometer knob

3. Unthread the potentiometer cable through the console bezel.
4. Lift and remove the contrast **potentiometer**.

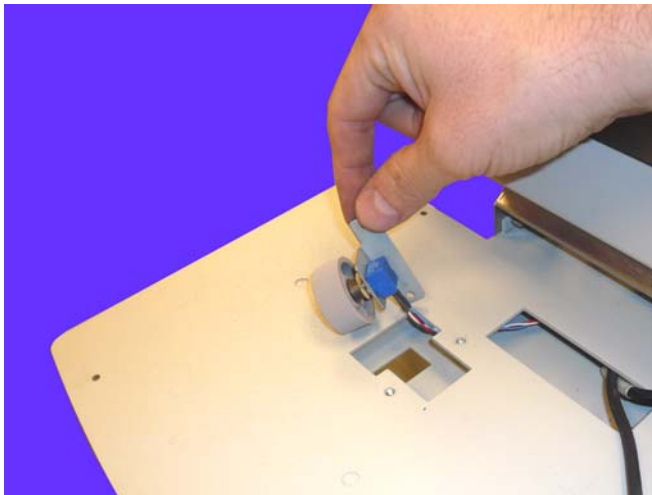


Figure 3-18. Remove the contrast potentiometer knob

USB Keyboard Removal

Many of the AWS keyboard removal figures can be used for reference.

1. Disconnect the keyboard cable from the mother board.
2. Remove the eight Torx **screws** from underneath the **keyboard base plate**. Use a Torx T-10 driver.
3. Lift the keyboard and **bezel** and turn them over, resting the keyboard face down on the keyboard table.

4. Remove the strain relief screw and the strain relief.

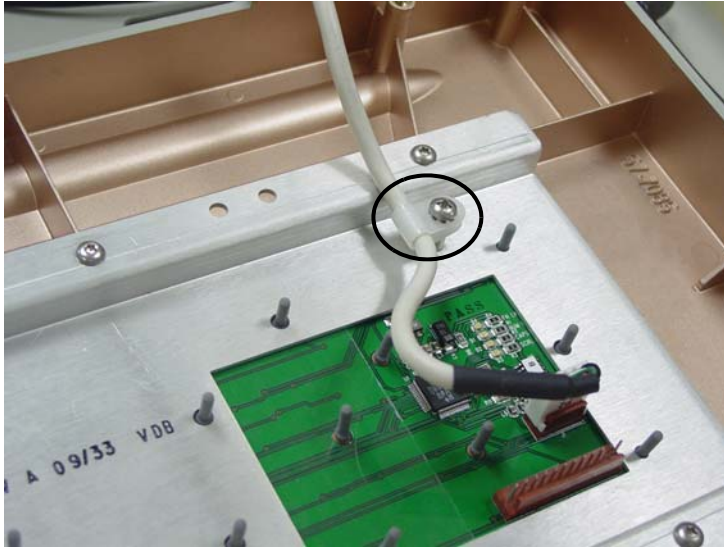


Figure 3-19. Remove the strain relief

5. Detatch the keyboard cable.

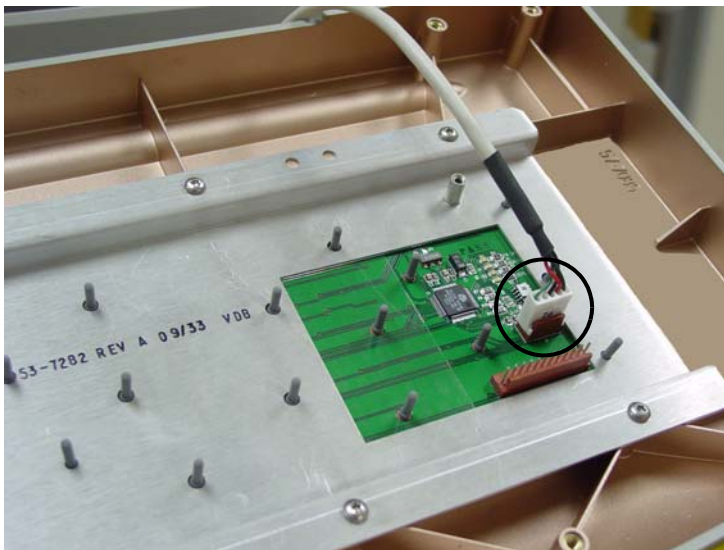


Figure 3-20. Remove the keyboard cable

6. Loosen and remove the six screws that hold the keyboard mounting plate to the bezel.

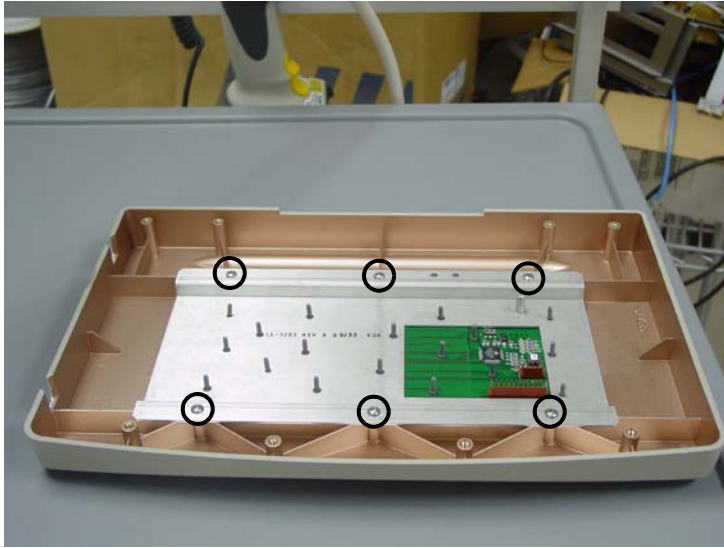


Figure 3-21. Remove mounting plate screws

7. Remove the keyboard.

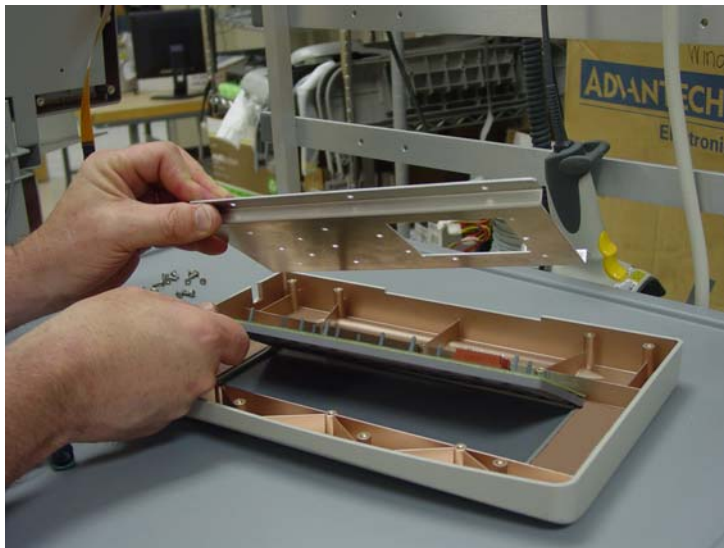


Figure 3-22. USB keyboard removal

Replacement Procedure

Refer to the removal procedure figures for the replacement procedure.

Potentiometer Replacement

1. Thread the red, white and blue cable into the keyboard support tray opening and through the console bezel.
2. Line up the contrast potentiometer with the two screw holes on the keyboard support tray and insert the screws.

3. Connect the red, white and blue contrast control cable to the motherboard connection.

PS2 Keyboard Replacement

1. Line up the new elastomer with the indentations on the keyboard.
2. Press the elastomer onto the keyboard, ensuring that it fits snugly.
3. Connect the keyboard connect board to the keyboard.
4. Thread the keyboard cable through the metal plate.
5. Align the keyboard and metal plate onto the keyboard bezel.
6. Replace the eight screws that secure the keyboard and metal plate to the bezel.
7. Thread the keyboard cable through the keyboard tray and the console bezel.
8. Align the keyboard bezel onto the keyboard base plate.
9. Replace the eight screws that secure the keyboard bezel to the keyboard tray.
10. Connect the keyboard cable to the motherboard.

USB Keyboard Replacement

1. Secure the keyboard cable with a strain relief.
2. Connect the keyboard cable to the keyboard.



Note: If replacing the bezel on a workstation with a fingerprint reader, the two knockouts on the right side of the bezel need to be removed with needle-nose pliers. This allows the routing of the reader cable through the keyboard bezel.

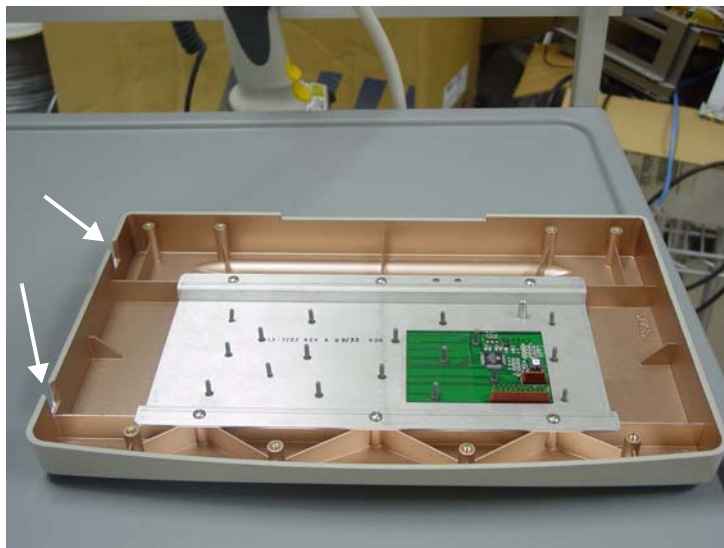


Figure 3-23. Knockouts

3. Align the keyboard and mounting plate onto the keyboard bezel.
4. Replace the six screws that secure the keyboard and metal plate to the bezel.
5. Thread the keyboard cable through the keyboard tray and the console bezel.
6. Align the keyboard bezel onto the keyboard base plate.

7. Replace the eight screws that secure the keyboard bezel to the keyboard tray.
8. Connect the keyboard cable to the motherboard. ETX1 boards uses the custom USB cable (J33 connection). EXT2 boards uses the standard USB cable (USB1).

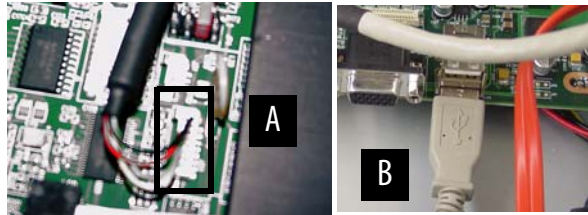


Figure 3-24. Keyboard cables—A: custom USB cable; B: standard USB cable

Touchscreen/Bezel Replacement

1. Place the touch screen glass into the LCD frame.
2. Place the LCD assembly onto the touch screen glass.
3. Connect the cables.
4. Thread the cables through the hole in the metal support plate
5. Place the metal support plate onto the LCD assembly
6. Replace the four screws securing the metal support plate.
7. Place the housing into the neck of the monitor housing.
8. Align the housing with the LCD frame and replace the 16 screws that secure the housing to the collar.
9. Put the cover back in place and secure it with the lock.

Keyboard Retrofit

There may be a need to replace the old PS2 keyboard with a new USB keyboard when supplies of the old keyboard run out. Refer to the appropriate figures in the removal procedures as needed.

1. Perform a graceful shutdown of the AWS.
2. Pivot the LCD assembly to the left (clockwise).
3. Remove the sixteen [screws](#) from the rear LCD housing using a T10 Torx driver.
4. Unlock the cam lock on the front of the AWS with the [#2036 key](#).
5. Lift the [cover](#) and pull it away from the machine.



Caution: If the lid is allowed to be dragged across the top of the anesthesia, the LCD Data Cable could be damaged.

6. Remove the keyboard cable from the motherboard.
7. Remove the eight Torx [screws](#) from underneath the [keyboard base plate](#). Use a Torx T-10 driver.
8. Lift the keyboard and [bezel](#) and turn them over, resting the keyboard face down on the keyboard table.
9. Unthread the old keyboard cable from the station.

10. Remove the old keyboard and bezel.

11. Thread in the new keyboard cable through the console bezel into the tray area.



Note: If the workstation has a fingerprint reader, the two knockouts on the right side of the bezel need to be removed with needle-nose pliers. This allows the routing of the reader cable through the keyboard bezel.

12. Place the new keyboard and bezel into position on the keyboard base plate.

13. Insert and tighten the eight screws at the bottom of the base plate.

14. Connect the keyboard cable to the motherboard. ETX1 boards use the custom USB cable (J33 connection). EXT2 boards use the standard USB cable (USB1).

15. Put the cover back in place and secure it with the lock.

16. Re-install the console bezel.

Printer

Introduction

The anesthesia workstation (AWS) may be equipped with a printer. This chapter will detail the removal and replacement of that printer.

The AWS now comes with an Advanced Printing System (APS) printer. This chapter notes the differences when servicing the old (Seiko) and new printers.

Tools List

The following tools are required to install/replace the printer:

- T8 Torx Driver
- T10 Torx Driver
- 9/64" Allen wrench
- #2036 key

Removal Procedure

Seiko Printer

1. Perform a graceful shutdown of the AWS.
2. Turn the LCD bezel and keyboard assembly to the left (clockwise) before removing the cover.
3. Unlock the cam lock on the front of the AWS with the #2036 [key](#).



Figure 4-1. Unlock the cam lock that secures the AWS lid

4. Lift the [cover](#) and pull it away from the machine.



Caution: If the lid is allowed to be dragged across the top of the anesthesia, the LCD Data Cable could be damaged.

5. Flip the platen lever to loosen the paper.



Figure 4-2. Release the printer platen lever

6. Remove the **paper** and the **spool** from the printer enclosure.

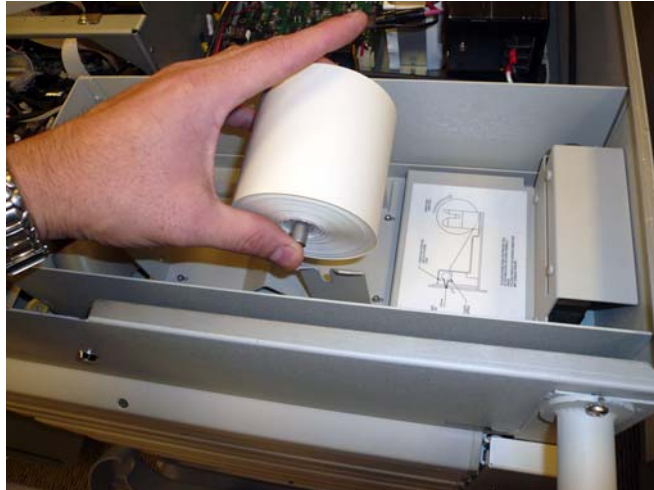


Figure 4-3. Remove the paper and the spool from the printer

7. Remove the four screws that attach the printer base to drawer bottom.



Figure 4-4. Remove the four screws that secure the printer base to the drawer bottom

8. Pull the printer drawer out.
9. Remove the four screws that secure the printer to the drawer front with a 9/64 Allen wrench.

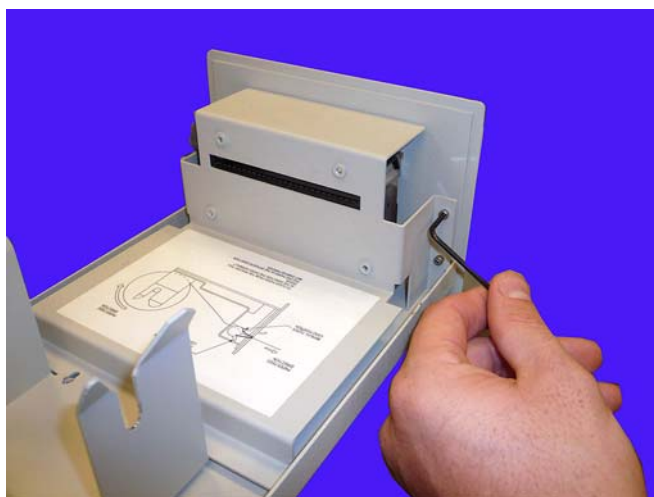


Figure 4-5. Remove the four screws that secure the printer to the printer door.

10. Remove the printer and printer base.
11. Push the drawer in.
12. Turn the base over.

13. Remove the four **screws** that secure the printer to the base wall.

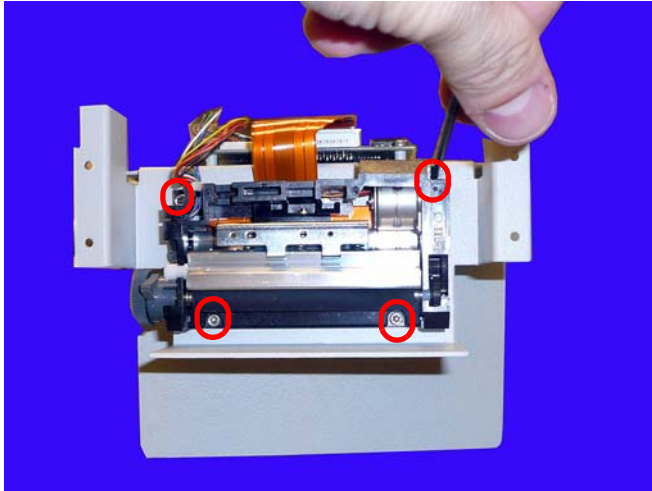


Figure 4-6. Remove the screws that secure the printer to the base.

14. Remove the four **screws** that secure the **printer controller board** to the printer base.



Figure 4-7. Remove the screws that secure the printer control board to the base.

15. Remove the ribbon **blue** attached to the printer control board.

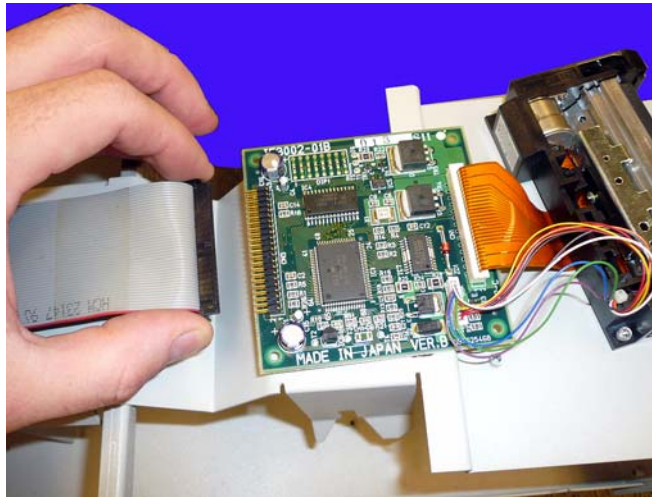


Figure 4-8. Remove the ribbon cable

16. Disconnect the sensor **blue** and the **flex blue** from the printer control board.

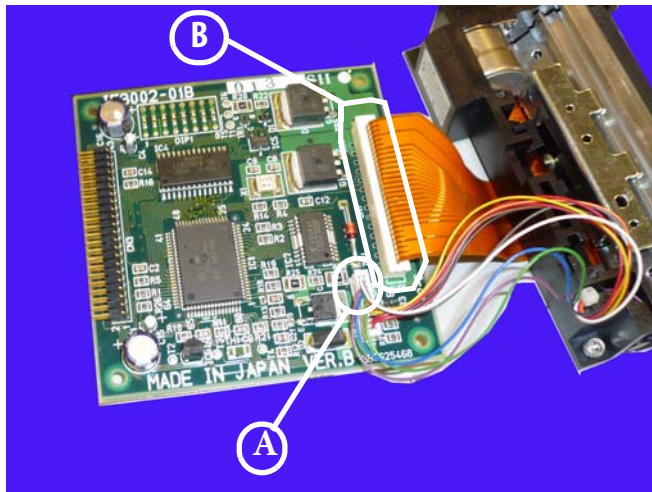


Figure 4-9. Remove the sensor cable (A) and the flex cable (B) from the printer control board

APS Printer

1. Perform a graceful shutdown of the AWS.
2. Turn the LCD bezel and keyboard assembly to the left (clockwise) before removing the cover.
3. Unlock the cam lock on the front of the AWS with the #2036 **key**. Refer to [Figure 4-1](#).
4. Lift the **cover** and pull it away from the machine.



Caution: If the lid is allowed to be dragged across the top of the anesthesia, the LCD Data Cable could be damaged.

5. Flip the platen lever to loosen the paper.

6. Remove the **paper** and the **spool** from the printer enclosure.

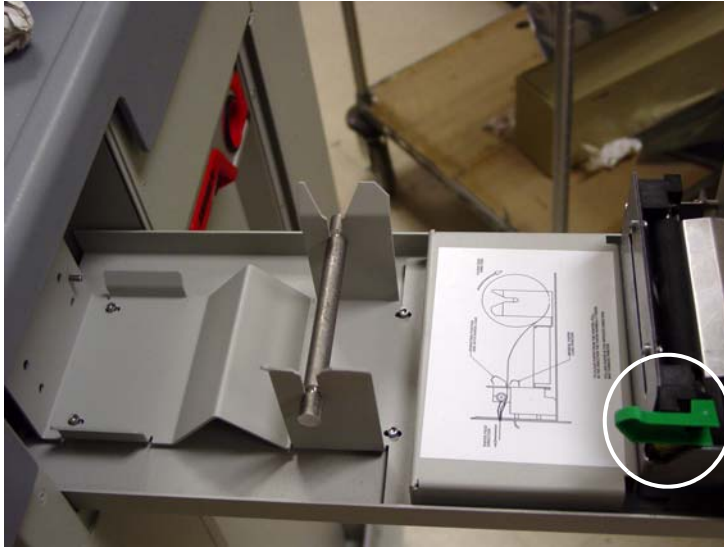


Figure 4-10. Platen lever on APS printer

7. Remove the four **screws** that attach the printer base to the drawer bottom. **Figure 4-4**
8. Pull the drawer out.
9. Remove the four **screws** that secure the printer to the drawer front.

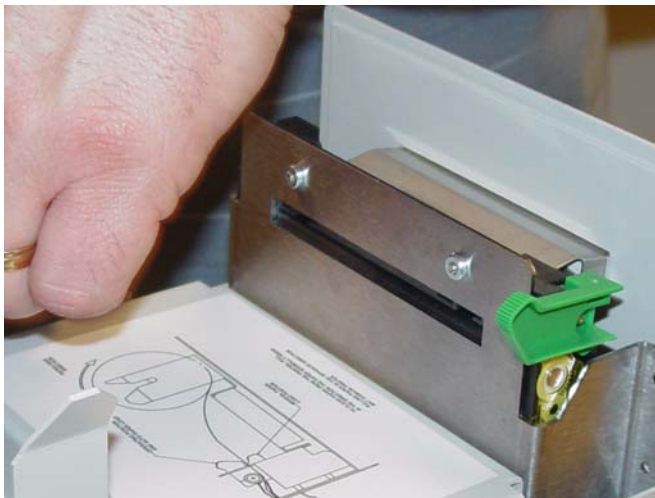


Figure 4-11. Remove the screws that secure the printer to the drawer front

10. Remove the **printer** and **printer base**.
11. Push the drawer in.
12. Turn the base over.

13. Remove the four screws that secure the printer to the base wall. (There are two at the bottom and four at the top. Only remove the two outside top screws.)

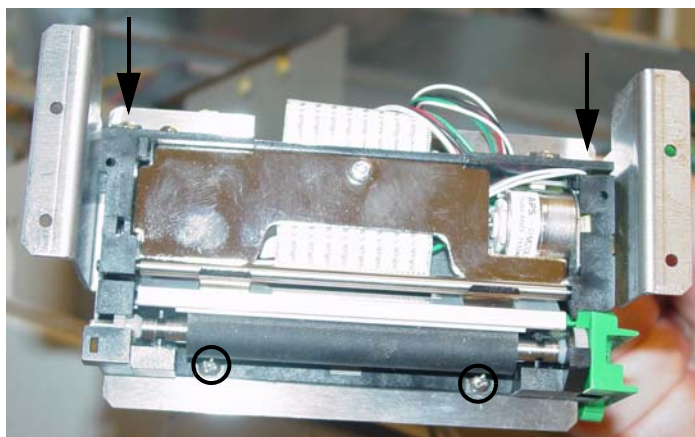


Figure 4-12. Remove the screws that secure the printer to the base.

14. Remove the cables from printer board.
- (A) ribbon and (B) power cables to motherboard
 - (C) switch and sensor cables and (D) flex cable to printer (free the printer unit)

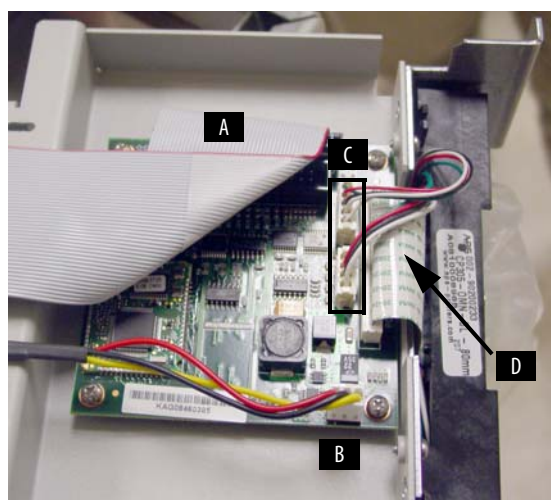


Figure 4-13. Remove the cables

15. Remove the four screws that secure the printer controller board to the printer base, then remove the board.



Figure 4-14. Remove the screws that secure the printer control board to the base.

Replacement Procedure

This section is for replacing the printer with the *same* printer type. Refer to the figures in the removal process as applicable.

Seiko Printer

1. Align the printer control board on the standoffs and insert the four screws that secure the board.
2. Connect the printer data cable and control cable to the printer control board.
3. Connect the ribbon cable to the printer board.
4. Align the printer to the printer base and insert the four screws.
5. Turn the printer base over.
6. Align the printer base to the holes in the drawer front, then insert/tighten the four screws that secure the printer.
7. Align the base to the standoffs in the drawer bottom, then insert/tighten the screws that secure the printer base to the enclosure.
8. Place the paper and spool into the anchors on the printer base.
9. Feed the paper through the printer.
10. Flip the platen lever to secure the paper in place.
11. Place and secure the AWS cover.
12. Turn the console bezel into position.
13. Plug in and turn on the AWS.

APS Printer

1. Align the printer control board on the standoffs and insert the four screws that secure the board.
2. Connect the ribbon and power cable to the printer. board.
3. Make sure the printer cables are wrapped/tucked into printer unit.

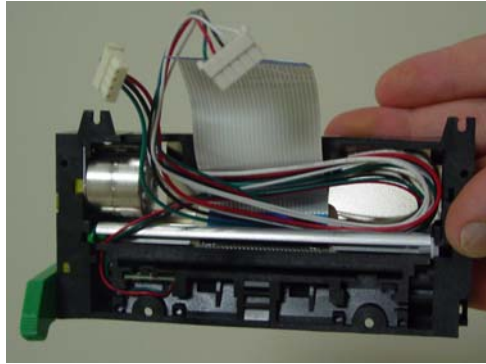


Figure 4-15. Printer cables

4. Connect the switch, sensor, and flex cables to the printer control board.
5. Align the printer to the printer base and insert/tighten the four screws.
6. Turn the printer base over.
7. Pull out the drawer.
8. Align the printer base to the holes in the printer door, then insert/tighten the four screws that secure the printer base to the drawer front.
9. Push the drawer in.
10. Align the base to the standoffs in the drawer bottom, then insert/tighten the screws.
11. Place the paper and spool into the anchors on the printer base.
12. Feed the paper through the printer as per the diagram on the printer bracket.
13. Flip the platen lever to secure the paper in place.
14. Place and secure the AWS cover.
15. Turn the console bezel into position.
16. Plug in and turn on the AWS.

Retrofit Procedure

The procedure is for replacing a Seiko printer with an APS printer.



Note: An APS printer is *not* replaced by a Seiko printer.

Seiko Module Removal

1. Perform a graceful shutdown of the AWS.
2. Turn the LCD bezel and keyboard assembly to the left (clockwise).

3. Unlock the cam lock on the front of the AWS. with the #2036 [key](#).
4. Lift the [cover](#) and pull it away from the machine.



Caution: If the lid is allowed to be dragged across the top of the anesthesia, the LCD Data Cable could be damaged.

5. Push the platen lever toward the frame of the AWS to loosen the paper.
6. Remove the [paper](#) and the [spool](#) from the printer enclosure.
7. Disconnect the Seiko printer ribbon cable from the motherboard.
8. Pull the printer drawer out.
9. Press the rail release under the drawer to remove it from the rail.

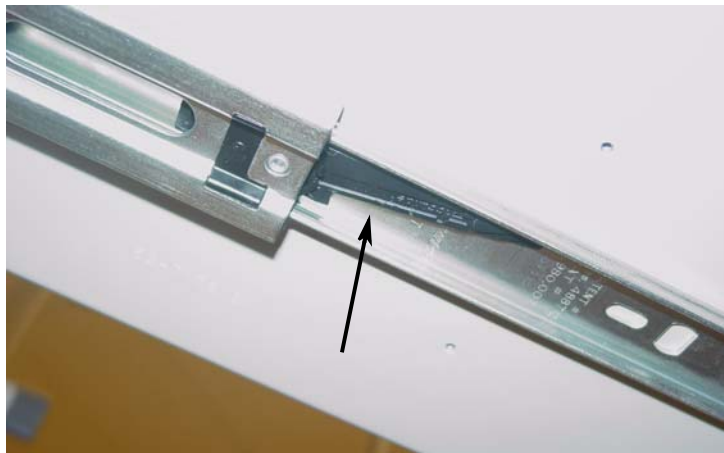


Figure 4-16. Rail release

10. Remove the six [screws](#) that attach the printer carrier to the frame.



Figure 4-17. Printer box screws

11. Remove the **printer carrier**.
12. Re-attach the drawer to the slide.

APS Module Installation

1. Pull the printer drawer out from the printer box.
2. Press the rail release under the drawer to remove it from the rail.
3. Secure the new printer box into the AWS with six screws.
4. Re-attach the drawer to the slide. Push the drawer in to lock it onto the slide.
5. Feed the cables through the slot in back of the drawer.
6. Attach the ground to the corner of the fan bracket with a screw or to an available standoff.
7. Attach the ribbon and power cables to the mother board.
8. Transfer the paper and spool from the old printer assembly to the APS printer.
9. Flip the platen lever and thread the paper as shown on the diagram on the printer bracket.
10. Place and secure the AWS cover.
11. Turn the console bezel into position.
12. Plug in and turn on the AWS.

Drawers

Introduction

There are a variety of drawers available for the Anesthesia Workstation, offering different levels of control for storing and tracking medications and pharmacy supplies.

The anesthesia drawer is the lowest security drawer available. It is typically used to store items that are frequently used and require little security. The drawer is custom configured using individual dividers and has a 24-line maximum capacity. The drawer comes in single-deep, double-deep and triple-deep configurations to store various items in the Anesthesia Workstation.

The Omnicell Sensing Lid (OSL) models have sensing lids. As each lid is lifted, the system senses and records access to the bin. This guarantees security to those drawers that contain controlled substances.

The Omnicell Locking Lid (OLL) models are the highest security drawer available. When these high security drawers are opened, the user can only access the one bin containing the pre-selected medication. No other bin is unlocked when the user is working in the desired bin. Special sensors provide audible and visual feedback if users attempt unauthorized entry into bins that are not pre-selected.

Tools List

The following tools are required to install, remove or repair a standard drawer:

- T10 Torx Driver
- T15 Torx Driver

Removal Procedure



Important: A Pharmacist must be present when servicing drawers where medications are present.

1. Perform a graceful shutdown of the CT PC box.

2. Remove the **manual override cover** on the pharmacy drawers.



Figure 5-1. Remove the Manual Override Cover

3. Pull the manual override lever and open the desired pharmacy drawer.
4. Remove the two **screws** securing the drawer controller cable clamp to the cable cover using a Torx T10 screwdriver.



Figure 5-2. Remove the Controller Cable Cover

5. Remove the **controller cable** and disconnect the drawer **controller cable**.



Figure 5-3. Remove the Controller Cable

6. Push the release levers on either side of the drawer up or down to release the drawer.



Figure 5-4. Push the Release Levers to Release the Drawer

7. Remove the **pharmacy drawer** from the cabinet.

Dividers

Configure the new anesthesia drawer per customer requirements before installation with [dividers](#).

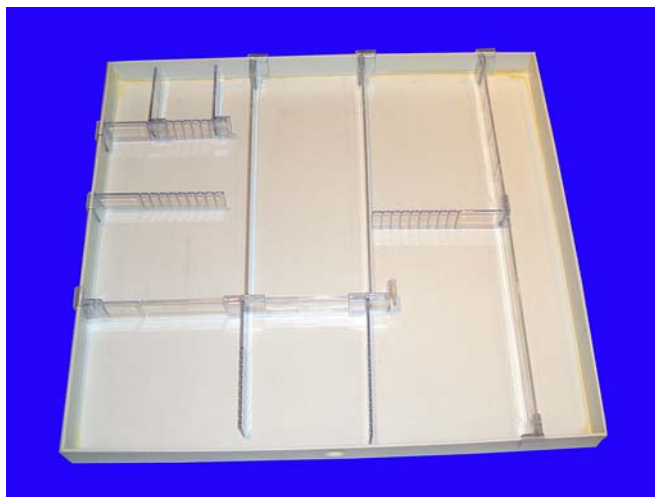


Figure 5-5. Anesthesia Drawer with Dividers



Note: It is recommended that a drawing be made of each drawer, showing the customer's preferred configuration for each quadrant of a given drawer.

1. Break the divider tabs according to the customer design.
2. Add the dividers to the [bin liner](#). The divider clip should fit snugly over the edges of the liner or over another divider.



Figure 5-6. Anesthesia Drawer Divider Clip

Replacement Procedure

1. Replace the drawer on the rails. Be sure to place the drawer controller cable between the two ends of the drawer controller cable clamp.

2. Connect the drawer controller cable to the drawer controller board at the rear of the drawer.



Figure 5-7. Connect the drawer controller cable to the controller board

3. Secure the pharmacy drawer controller cable cover to the pharmacy drawer with the two screws using a Torx T10 screwdriver.
4. Close the drawer and replace the pharmacy manual override cover.
5. Power up the cabinet.

Cabinet Configuration

Once the new drawer has been installed into the Anesthesia Workstation, it must be configured before the AWS software will properly function.

1. Enter a user name and password from the main screen to enter the Administration menu.

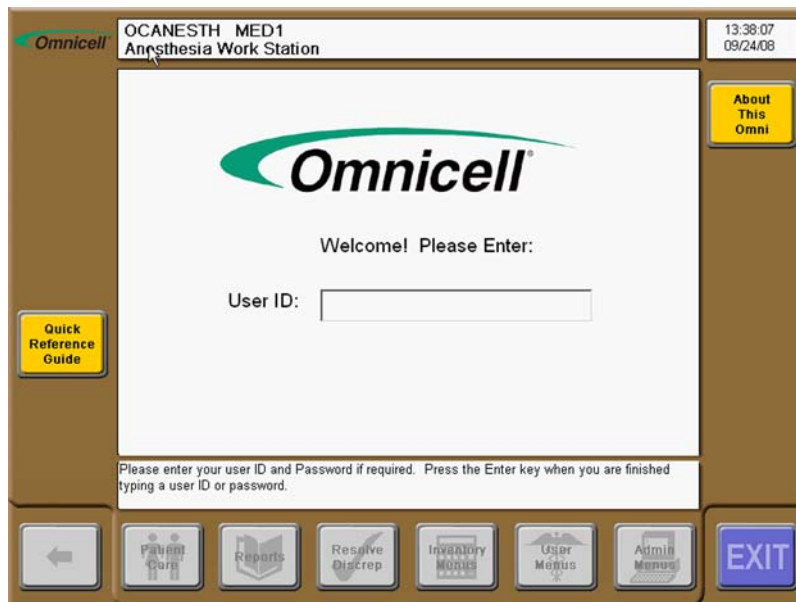


Figure 5-8. Enter a user name and password

2. Select **OmniConfig** on the touch screen monitor.
3. Select **Program Pharmacy Drawers** from the list of items.

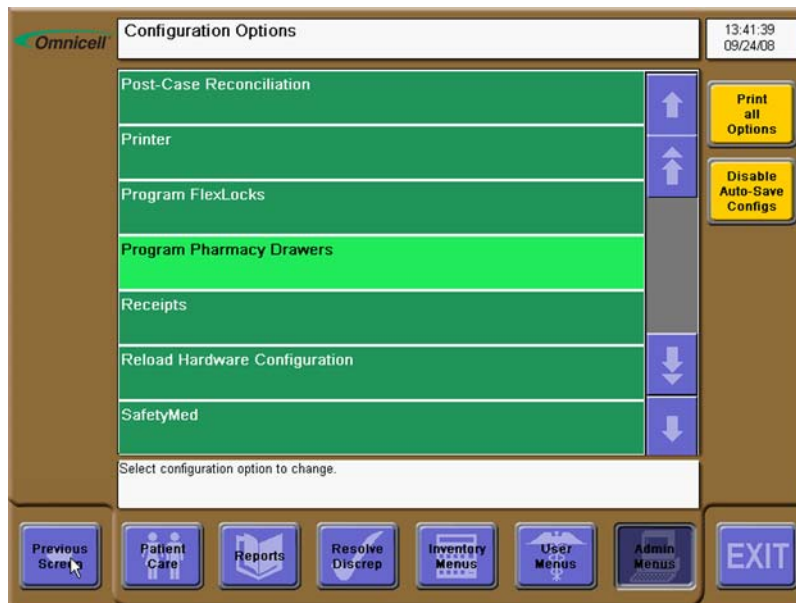


Figure 5-9. Select Program Pharmacy Drawers from the list

4. Select the zone in which the new drawer or drawers were installed.

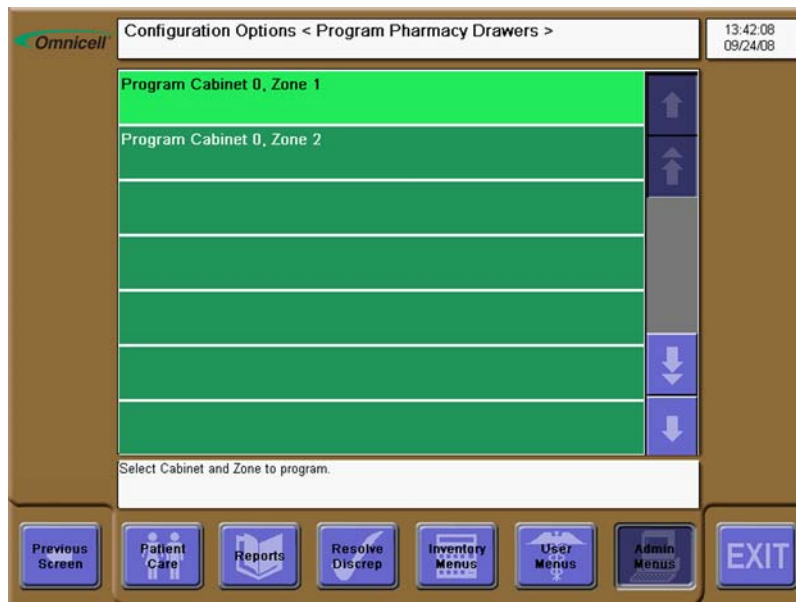


Figure 5-10. Select the zone

- The leading light on the first drawer in that zone will light up. Press the button on the drawer to program the drawer.

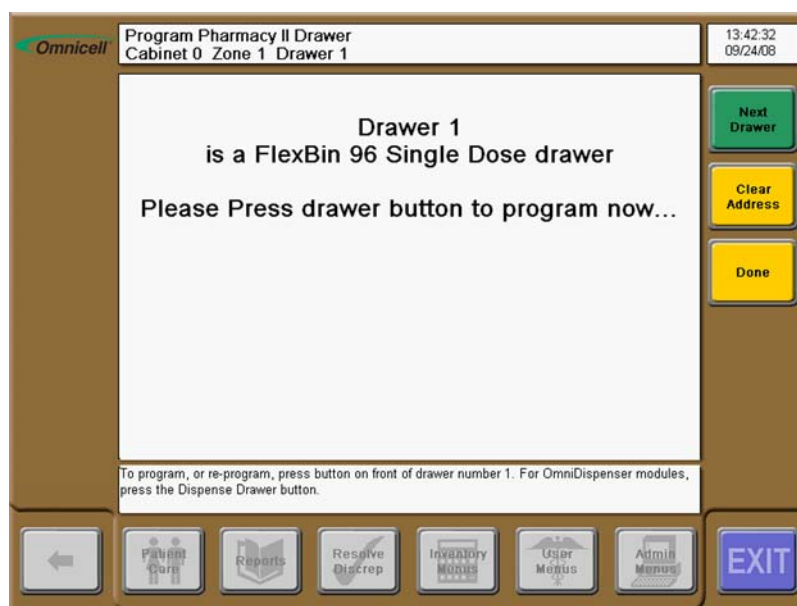
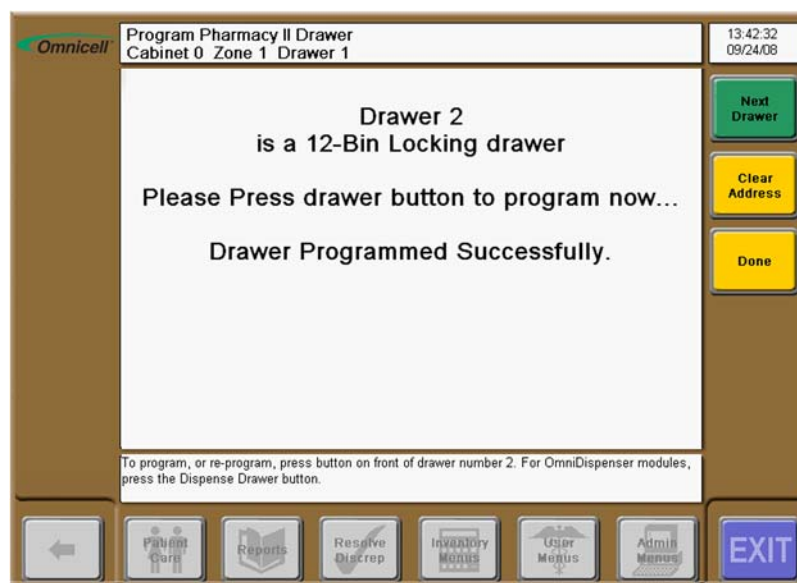


Figure 5-11. Press the drawer button to program the drawer

- The next drawer in the zone will light up. Press the button on the drawer to program the drawer.



- Continue with this process until all drawers are programmed.

Scanner Check



Important: A Pharmacist must be present when servicing drawers where medications are present.

1. Remove an item from an anesthesia drawer.
2. Go to the **Patient Function** screen or the **Issued Items** screen
3. Use the [scanner](#) to scan the item bar code.
4. Remove the same item again by pressing the + sign next to that item.
5. Return the item by pressing the - sign.
6. Close the drawer.
7. Repeat the previous steps for different items as needed.



Note: The +/- buttons items appear next to anesthesia drawers. The buttons do not appear for items removed from locked narcotic drawers. These must be issued using the **Remove Meds** and returned using the **Returned Meds** function.

Peripheral Devices

Introduction

The Anesthesia Workstation may be equipped with optional feature assessors that are not available on any other Omnicell cabinet. Those accessories include:

- Side table
- Work Surface Light
- Tilt Bins
- Sharps Bin (with Holey Bar)

Tools List

The following tools are required to uninstall, remove or repair peripherals on the Anesthesia Workstation:

- T10 Torx Driver
- T15 Torx Driver

Work Surface Light

Removal Procedure

1. Perform a graceful shutdown of the AWS.
2. Turn the LCD bezel and keyboard assembly to the left (clockwise) before removing the [cover](#).
3. Unlock the cam lock on the front of the AWS with a #2036 [key](#).



Figure 6-1. Unlock the cam lock that secures the AWS lid

4. Lift the cover and pull it away from the machine.



Note: The plastic cover is heavy because a metal plate is screwed to the underside of the cover.



Caution: If the lid is allowed to be dragged across the top of the Anesthesia Workstation, the LCD data cable could be damaged.

5. Remove the cover from the top of the Anesthesia Workstation.
6. Unplug the work surface **light cable** from J16 on the motherboard.

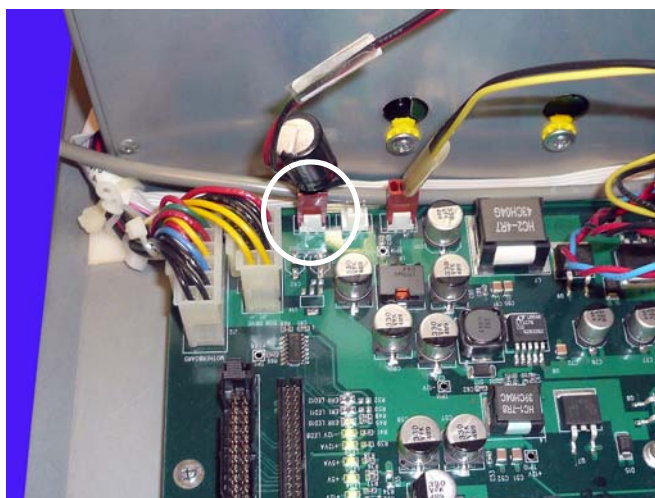


Figure 6-2. Disconnect the work surface light from the motherboard

7. Remove the two Torx **screws** that secure the work surface **light cover**. Use a Torx T10 screwdriver.

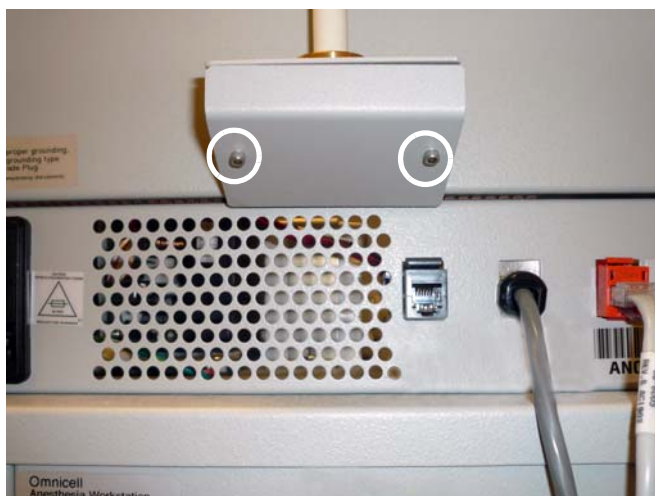


Figure 6-3. Remove the screws that secure the work surface light cover

8. Remove the four screws that secure the work surface light bracket to the rear of the AWS.



Figure 6-4. Remove the screws that secure the work surface light to the AWS

9. Pull the wires through the opening and remove the work surface light.

Replacement Procedure

1. Feed the wires through the opening in the rear of the AWS.
2. Line up the work surface light on the rear of the AWS and connect the four screws that secure the light to the AWS frame.
3. Connect the wires to J16 on the motherboard.

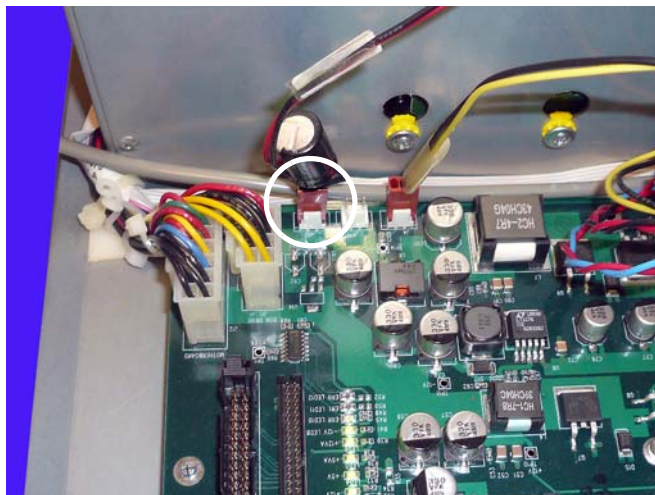


Figure 6-5. Connect the work surface light to J16 on the motherboard.

4. Replace the cover on the work surface light.



Figure 6-6. Replace the screws that secure the work surface light cover

5. Power up the Anesthesia Workstation and test the work surface light.

IV Pole

Removal Procedure

Ensure that no medications are attached to the [IV pole](#) before removing the pole.

1. Remove the two [screws](#) that secure the IV pole to the Anesthesia Workstation.



Figure 6-7. Remove the two screws that secure the IV Pole to the AWS

2. Remove the IV Pole.

Replacement Procedure

1. Line up the IV pole so that the two screws that secure the IV pole to the Anesthesia Workstation can be attached.
2. Replace the screws that secure the IV Pole to the Anesthesia Workstation.



Figure 6-8. Replace the two screws that secure the IV Pole to the AWS

Auxiliary Fold-out Shelf

The auxiliary fold-out shelf may only be installed on the right side of the anesthesia workstation (AWS).

Removal Procedure

1. Fold the shelf up so that it rests against the AWS.

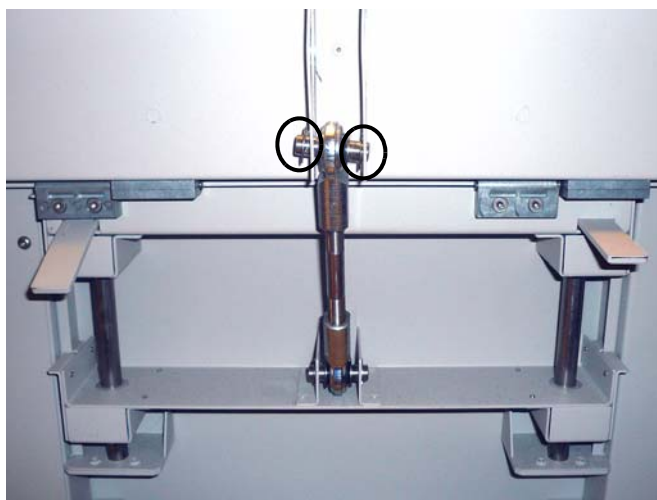


Figure 6-9. Fold up the shelf

2. Remove the two top e-rings that secure the arm to the shelf.
3. Twist the arm until it comes free from the shelf supports.



Important: Hold the shelf with one hand when removing the arm or it will fall after the arm comes free.

4. Remove the four Torx T15 screws that secure the shelf to the tray assembly.

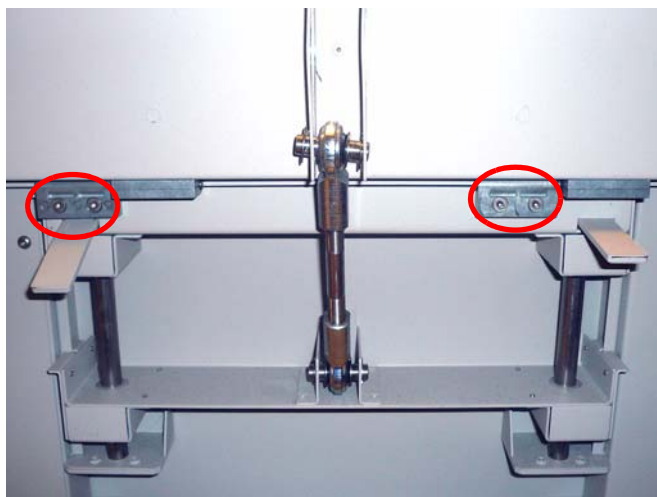


Figure 6-10. Remove the screws that secure the shelf to the assembly

5. Remove the shelf.
6. Remove the four screws on each side of the tray assembly.



Important: Hold the assembly when removing the screws or it will fall after the screws come free.

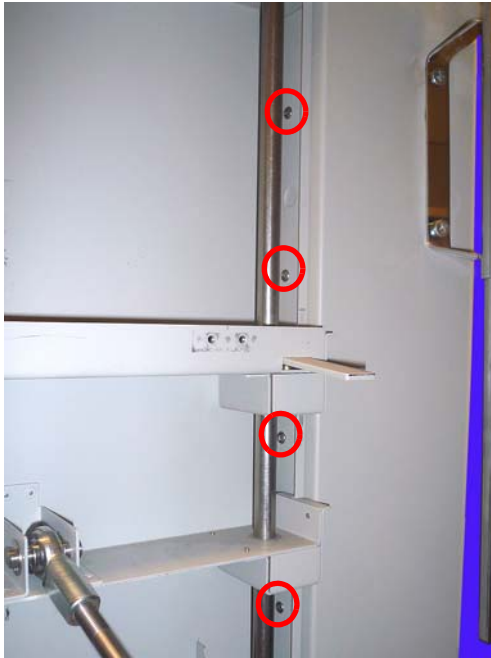


Figure 6-11. Remove the screws that secure the assembly to the AWS

7. Remove the auxiliary tray assembly.

Replacement Procedure

1. Remove the accessory mounting rails from the AWS frame.
 1. Place the assembly into the side of the AWS and line up the assembly with the screw holes.
 2. Replace the four screws on each side that secure the auxiliary tray assembly to the AWS frame.
 3. Place the tray back on its supports and replace the four screws that secure the tray to the assembly.
 4. Place the arm into place and replace the two outside e-rings.

Tilt Bin Organizer

Removal Procedure

1. Pull the second and fourth bin out and lift slightly, freeing the bins from the organizer.



Figure 6-12.

2. Remove the two screws that secure the tilt bin organizer to the support rack.
3. Remove the organizer.
4. Remove the two T15 screws on each side of the back of the AWS that secure the rack to the AWS.



Figure 6-13. Remove the two screws on each side of the AWS

5. Pull the **rack** up and out from the AWS frame support.

Replacement Procedure

1. Place the rack into the holes on the back of the AWS frame.
2. Replace the two screws on each side of the back of the AWS.
3. Place the organizer so that the holes in the organizer line up with the holes on the rack.
4. Replace the two screws that secure the organizer to the rack.
5. Replace the two bins.

Appendix A: Parts

Part Link Table

This section links parts mentioned in the text with the Agile part number and description.

Part #	Part Name	Agile Description	Where Used
12-1266	scanner	MFG ASSY,LS4208,BAR CODE SCANNER,USB CONFIGURED,RSS CAPABLE	Scanner Check
13-1128-58	electronics tray (original)	MFG ASSY,CT PC BOX,W/PTR, 5.8 XP ETX CE [inactive]	Electronics Tray, PowerCom3 CT PC Tray
14-2040	PowerCom3 electronics tray (new)	ELECTRONICS TRAY,ETX2,5.10.1.9,ANESTHESIA	PowerCom3 CT PC Tray
14-2113	wireway	MFG,ASSY,WIREWAY,ANESTH	Wireway Access
14-7013	pharmacy drawer	MODEL,OSL12,REGULAR,SENSING DRAWER,RX2	Drawers
14-7015		MODEL,OSL24,24-BIN,SENSING DRAWER,RX2	
14-7019		MFG,ASSY,96-SD,DRAWER,RX2	
14-7023		MFG,ASSY,2222,SD,DRAWER,RX2	
14-7024		MFG,ASSY,3131,SD,DRAWER,RX2	
14-7034	tray assembly (top level BOM)	MFG,ASSY,AUX,WORKSURFACE ANESTHESIA	Auxiliary Fold-out Shelf
15-7026	drawer rail (top 2 parts for the right side; bottom part for left side)	MFG,ASSY,SLIDE,MOUNT,OMNIRX (right side)	Wireway Access
15-7027		MFG ASSY,SLIDE MOUNT,M.O.ATTACH,OMNIRX	
91-7041		SLIDE,OUTER HALF,SNAP-IN,ACCURIDE C3820-332-20L (left side)	
15-7054	bin liner	LINER ASSY,SINGLE DEEP DRAWER,ANESTHESIA	Dividers
15-7062		LINER,ASSY,DOUBLE-DEEP, DRAWER, ANESTHESIA	
15-7063		LINER,ASSY,TRIPLE-DEEP,DRAWER,ANESTHESIA	
15-7055	printer [top 2 parts: complete unit--carrier, drawer, bracket] [bottom 2 parts: printer itself]	MFG,ASSY,PRINTER,ANESTHESIA (Seiko)	Printer, Manual Override Cable
15-7085		MFG ASSY, PRINTER, APS, AWS	
70-7000		PRINTER,THERMAL,SEIKO LTP3345A-S576	
70-7002		PRINTER, THERMAL, APS CP305-80MM-BL-OMN	
15-7057	rack (accessories)	MFG, ASSY, ACCESSORY, RACK, ANESTHESIA	Tilt Bin Organizer
15-7060	light cable	OPTION,KIT,LIGHT,ANESTHESIA	Work Surface Light
40-1045	printer controller board	PCBA, PRINTER INTERFACE, APS	Printer
71-1008		PCB ASSY,PRINTER,RIGHT ANGLE SHROUDED CONN (Seiko)	
40-7035	SPC board	PCB ASSY,RX,DRAWER,CONNECT OMNIRX	Wireway Access
42-1185	cabinet power cable	CABLE,ASSY,POWER,SWITCH	Electronics Tray, PowerCom3 CT PC Tray

A-2 | Appendix A: Parts
Part Link Table

Part #	Part Name	Agile Description	Where Used
42-1204	card reader cable	CABLE,ASSY,POWER,CARD,READER CT,PC,BOX	Electronics Tray, PowerCom3 CT PC Tray
42-1302-02	keyboard cable	CABLE,ASSY,USB KEYBOARD,QWERTY TO MOTHERBOARD,STD,CTPC (new)	Electronics Tray, PowerCom3 CT PC Tray, USB Keyboard Removal
71-1079	(cable hard wired to old model)	KEYBOARD,ELASTOMER,84-KEY ENGLISH (old)	
42-1304	printer cable	CABLE ASSY, POWER, APS PTR, CT PC BOX	Printer
42-7030	drawer cable	CABLE,ASSY,DRAWER,OMNIRX	Drawers
42-7038	speaker cable	CABLE,ASSY,SPEAKER,COLOR TOUCH	Electronics Tray, PowerCom3 CT PC Tray
42-7043	video control board cables	CABLE,ASSY,REACH,CNTRLR,TO NEC,INVERTER (old)	LCD Bezel Assembly
42-7047		CABLE,ASSY,FLAT,PNL-BUFFER,BD (old)	
42-7061		CABLE,ASSY,TOUCH,PAD,DATA ANESTHESIA (new)	
42-7077		CABLE ASSY, LVDS, AWS (new)	
42-7092		CABLE ASSY,ETX-REV C TO INVERTER, 121PW181, RX (new)	
42-7061	touch screen data cable	CABLE,ASSY,TOUCH,PAD,DATA ANESTHESIA	Electronics Tray, PowerCom3 CT PC Tray, LCD Bezel Assembly
42-7077	LCD data cable	CABLE ASSY, LVDS, AWS	Electronics Tray, PowerCom3 CT PC Tray
42-7087	contrast cable	CABLE ASSEMBLY, POTENTIOMETER, OMNIRX	Potentiometer Removal, Electronics Tray, PowerCom3 CT PC Tray
42-7088-12	printer ribbon cable	CABLE ASSY,PRINTER,48" (Seiko)	Printer, Manual Override Cable, Electronics Tray, PowerCom3 CT PC Tray
42-7096-12		CABLE ASSY, PRINTER, 34 PIN, 48" (APS)	
42-7092	inverter cable	CABLE ASSY,ETX-REV C TO INVERTER, 121PW181,RX	Electronics Tray, PowerCom3 CT PC Tray
42-7095	fan power cable	CABLE ASSY, 2 FAN, 92MM, 12VDC, OMNIRX	Electronics Tray, PowerCom3 CT PC Tray
51-7024	spool	SHAFT,PAPER,ROLL,OMNIRX	Printer, Manual Override Cable
51-7025	manual override cable	CABLE,MANUAL OVERRIDE,OMNIRX	Manual Override Cable
	manual override cable nut (back frame); [nut part of cable assembly]		
51-2064	override handle	KNOB,PULL,MANUAL,OVERRIDE OMNIRX	Manual Override Cable
51-7078	cover	WORKSURFACE,CONSOLE	AWS Cover, Printer, Wireway Access, Work Surface Light, PS2 Keyboard Removal, Keyboard Retrofit
53-7250	[The cover has 2 parts are assembled together.]	BKT,COVER,CONSOLE,AWS	

Part #	Part Name	Agile Description	Where Used
53-2079	manual override assembly	BRACKET,MANUAL,OVERRIDE,OMNIRX	Manual Override Cable
53-2082	manual override cover	COVER,MANUAL OVERRIDE, OMNIRX	Wireway Access Drawers
53-7080	drawer controller cable clamp	BRACKET,CABLE,CLAMP,DRAWER,RX	Drawers
53-7176 53-7280 53-7281	printer base [Seiko printer has 1 bracket; APS printer has 2 brackets attached to each other as one unit.]	BKT,PRINTER,MOUNT ANESTHESIA PLATE,MOUNTING,LCD ANESTHESIA BKT,KEYBD-LCD,CONSOLE ANESTHESIA	Printer
53-7177	printer carrier (box/enclosure)	BKT,SLIDE,MOUNTER,PRINTER ANESTHESIA	Printer, Manual Override Cable
53-7182	metal support plate	BKT,84-KEY,TO,BEZEL ANESTHESIA	PS2 Keyboard Removal
53-7186 53-7187	shelf (work surface brackets together)	BKT,WORKSURFACE,TOP ANESTHESIA BKT,WORKSURFACE,BOTTOM ANESTHESIA	Auxiliary Fold-out Shelf
53-7195	light cover	BRACKET,TOP,LAMP,ANESTHESIA	Work Surface Light
53-7196	light bracket	BKT,BOTTOM,LAMP,ANESTHESIA	Work Surface Light
53-7282	keyboard mounting plate	BRKT, KEYBOARD MOUNT, USB, AWS	PS2 Keyboard Removal, USB Keyboard Removal, Keyboard Retrofit,
54-7000	front transport handle	WELDMENT,FRONT,HANDLE ANESTHESIA	Front Transport Handle
54-7001	side transport handle	WELDMENT,SIDE HANDLE,ANESTHESIA WORKSTATION	Side Transport Handle
57-7068	LCD housing cover (multiple parts)	BEZEL,LCD,REAR,CONSOLE,ANESTHESIA	LCD Bezel Assembly
57-7071	front bumper	BUMPER, FRONT, ANESTHESIA	Bumpers
57-7072	rear bumper	BUMPER, SKIRT, REAR, ANESTHESIA	Bumpers
57-7073 57-7074	side bumper	BUMPER, RIGHT, ANESTHESIA BUMPER, SKIRT, LEFT, ANESTHESIA	Bumpers
57-7085 57-7066	keyboard bezel	BEZEL, KEYBOARD, CONSOLE, USB, AWS (new) BEZEL,KEYBOARD,CONSOLE ANESTHESIA (old)	PS2 Keyboard Removal, USB Keyboard Removal, Keyboard Retrofit
57-7106 57-7107	dividers (and clips)	DIVIDERS, 4 X 6 3/4, DD LINER, DRW, AWS T-CLIP,DRAWER RAIL/DIVIDER,ANESTHESIA	Dividers
70-7000 70-7002	printer sensor cable [hardwired to printer]	PRINTER,THERMAL,SEIKO LTP3345A-S576 PRINTER, THERMAL, APS CP305-80MM-BL-OMN	Printer
70-7000 70-7002	printer flex cable [hardwired to printer]	PRINTER,THERMAL,SEIKO LTP3345A-S576 PRINTER, THERMAL, APS CP305-80MM-BL-OMN	Printer
70-7002	printer switch cable [hardwired to printer]	PRINTER, THERMAL, APS CP305-80MM-BL-OMN	Printer
71-1079	keyboard connect board (screwed on keyboard with hard wired cable)	KEYBOARD,ELASTOMER,84-KEY ENGLISH (old)	PS2 Keyboard Removal
71-1079 40-1034	keyboard	KEYBOARD,ELASTOMER,84-KEY ENGLISH (old) PCB ASSY,KEYBOARD,QWERTY,USB KB,PS/2 MSE,84-KEY,CTPC (new)	PS2 Keyboard Removal, USB Keyboard Removal

A-4 | Appendix A: Parts
Part Link Table

Part #	Part Name	Agile Description	Where Used
71-1106	touch screen glass	TOUCHSCREEN, 12.1", GASKETED	LCD Bezel Assembly
71-1145	elastomer	OVERLAY, ELASTOMER, QWERTY, ENGLISH, CTPC	PS2 Keyboard Removal
71-7005	LCD screen	LCD, COLOR, 12.1" NEC NL8060BC31-28D / NL8060BC31-41D	LCD Bezel Assembly
722003741	side transport handle (outside) screw	SCREW, PH, PAN, SEM, 10-32, X 1/2, SS	Side Transport Handle
	side transport handle (inside) screw		Side Transport Handle
	front transport handle screw		Front Transport Handle
80-0816	potentiometer	POTENTIOMETER, 10K	Potentiometer Removal
42-7087	upper level	CABLE ASSEMBLY, POTENTIOMETER, OMNIRX	
88-6014	reach buffer board cable	CABLE, ASSY, REACH, CNTRLR, TO FLAT, PANEL (old)	LCD Bezel Assembly
90-7000	bin organizer	TILT, BIN, ORGANIZER ARMSTRONG, ATB-5X	Tilt Bin Organizer
	bin organizer screw		
90-7001	IV pole	I.V., POLE, ARMSTRONG, PIV-1	IV Pole
	IV pole screw		
91-2062	strain relief	CLAMP, CABLE, .190, NYLON, NATURAL	USB Keyboard Removal
92-1000	key	CAM, LOCK, #2036	AWS Cover, Printer, Work Surface Light, PS2 Keyboard Removal, Keyboard Retrofit
92-1002	override key(s)	CAM, LOCK, #2202	Wireway Access
92-1011		CAM, LOCK, #2232	
94-6080	rack screw	SCREW, BHCS, 1/4-20, X, 1/2, SS	Tilt Bin Organizer
94-6132	light bracket screw	SCREW, BH, TORX, 8-32, X, 3/16, SS	Work Surface Light
	(cable to assembly) screw		Manual Override Cable
94-6133	drawer rail screw	SCREW, SHCS, 4-40, X, 5/8, SS	Wireway Access
	wireway screw (front frame)		
	wireway screw (side frame)		
94-6138	strain relief screw	SCREW, BH TORX, 6-32X1/4, SS	USB Keyboard Removal
	mounting plate screw		USB Keyboard Removal
	metal support plate screw		PS2 Keyboard Removal
94-6147	printer carrier screw	SCREW, BH, TORX, 6-32, X, 3/8, SS	Printer
	potentiometer screw		Potentiometer Removal
	LCD housing screw		LCD Bezel Assembly, Keyboard Retrofit
94-6162	drawer controller cable cover screw	SCREW, FH, TORX, 6-32X3/16, 100, DEG, C'SINK	Drawers
94-6167	manual override cable nut (front frame)	NUT, EX, SMALL, HEX, 10-32, 1/4, X 3/32, SS	Manual Override Cable
94-6170	fastener	STUD, 1/4, TURN, WING, HD, SOUTHCO	Electronics Tray, PowerCom3 CT PC Tray

Part #	Part Name	Agile Description	Where Used
94-6173	drawer front screw	SCREW,SHCS,4-40,X,3/16,SS	Printer
	printer controller board screw		Printer
	printer base screw		Printer
	light cover screw		Work Surface Light
94-6214	tray assembly screw	SCREW,FH,TORX,8-32,X,.59,SS	Auxiliary Fold-out Shelf
94-6237	keyboard bezel screw	SCREW,FH,TORX,6-32,X,3/8 100,DEG	LCD Bezel Assembly
94-6238	keyboard base plate screw	SCREW,BH,TORX,6-32,X,5/16,SS	PS2 Keyboard Removal, USB Keyboard Removal, Keyboard Retrofit
94-6243	shelf screw	SCREW,BH,TORX,6-32,X,3/4,SS	Auxiliary Fold-out Shelf
94-6244 94-6246	rear bumper screw (and retainer)	STUD,#81,1/4,TURN,81-12-120-31SOUTHCO STUD,RETAINER,#81,1/4,TURN SOUTHCO,81-32-301-12	Bumpers
94-6245 94-6246	front bumper screw (and retainer)	STUD,1/4 TURN,WING HEAD STUD,RETAINER,#81,1/4,TURN SOUTHCO,81-32-301-12	Bumpers
94-6247	e-ring	E-RING,3/8,SHAFT,SS	Auxiliary Fold-out Shelf
95-6015	paper	PAPER,THERMAL,92M ROLL,80MM WIDE	Printer, Manual Override Cable

Index

A

accessories 6-1
 APS printer 4-5
 auxiliary fold-out shelf 6-6
 AWS features 2-1

B

bezel 3-12
 bin liner. 5-4
 bumpers 2-5

C

cable 4-5
 cables 1-3
 configuration 5-5
 contrast control cable 3-9
 contrast potentiometer 3-10
 cover 1-1

D

dividers 5-4
 drawer 5-1

E

elastomer 3-8
 electronics tray 1-1

F

front bumper 2-5

I

IV pole 6-4

K

keyboard 3-6, 3-10, 3-14
 keyboard base plate 3-5, 3-10, 3-14

L

LCD bezel assembly 3-1, 3-14
 LCD housing cover 3-2
 LCD screen 3-3

M

manual override cable 2-7
 manual override cover 5-2
 metal plate. 3-7
 metal support plate 3-3
 moving bars 2-11

O

Omnicell locking lid (OLL) 5-1
 Omnicell sensing lid (OSL) 5-1

P

PowerCom3 1-5
 printer 4-3, 4-6
 control cable 4-5
 flex cable 4-7
 ribbon cable 2-7, 4-5
 sensor cable 4-5, 4-7
 switch cable 4-7
 printer controller board 4-4, 4-8

R

rails 2-3
 reach buffer board 3-3

S

scanner 5-8
 security 5-1
 Seiko printer 4-1
 shroud 3-6, 3-10, 3-14
 SPC board 2-4
 SPC board connectors 2-4
 spool 2-7
 strain relief 3-11

T

thermal printer paper 2-7
 tilt bin organizer 6-8
 tools 1-1, 2-1, 3-1, 4-1, 5-1, 6-1
 touch screen glass 3-3

V

video control 3-3

W

wireway 2-3

work surface light 6-2

Documentation Feedback

This document is designed to provide relevant technical information to those responsible for the implementation, service, and support of Omnicell products. The Documentation team needs your input, so we can continue to improve our publications.

Sending Comments to the Technical Documentation Team

Did this document meet your needs? If so, please let us know what we're doing right. If not, please provide specific feedback. E-mail or fax your feedback as follows:

- E-mail: **Documentation Requests** e-mail group at **documentationrequests@omnicell.com** (specify the document title or PN).
- Fax: Send this page, along with your feedback, to **(650) 251-6266**, attention: Documentation.

This document is designed to provide relevant technical information to Omnicell personnel responsible for the implementation, service, and support of Omnicell Automation Systems.

Feedback Form

Name:	E-mail:
Dept./Title:	Phone:
Feedback:	

