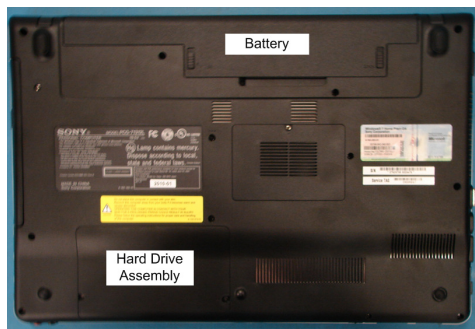


### **IMPORTANT!** **PLEASE READ BEFORE YOU START**

These easy instructions will guide you through the Hard Drive replacement process.

- ✓ Before you begin, place your notebook computer on a clean or covered surface to avoid damage to the computer's case.\*
- ✓ Follow the ESD (Electrostatic Discharge) damage prevention instructions:
  - Hold parts by the edges, away from exposed circuitry when possible.
  - Do not walk around excessively as this promotes static build-up.
- ✓ Before you begin, remove any jewelry you may be wearing to prevent scratches to the surface of your notebook computer.\*
- ✓ The appearance of the electronic components shown in the illustrations may differ from the components shipped. This slight difference does not affect the accuracy of these instructions.

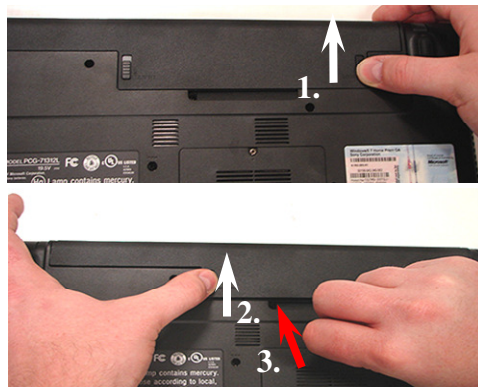
\* Sony is not responsible for damage caused by incorrect handling of the notebook computer.



### **Prepare the Computer**

**⚠ CAUTION:** Make sure the computer is turned off, the lid is closed, and the AC Adapter is disconnected. Failure to do so can result in damage to the computer.

**Step 1.** Place the computer upside down on a protected surface with the front edge facing you.

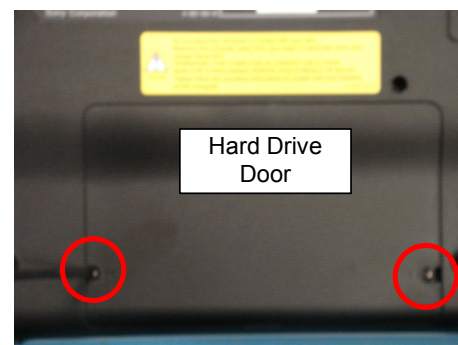


Lift here to remove the battery

### **Battery Pack Removal**

#### **Step 2:**

- 1) Slide the right battery tab to the unlock position.
- 2) With your left thumb, slide the left battery tab up and hold.
- 3) Lift the battery with your right thumb using the notch at the bottom.



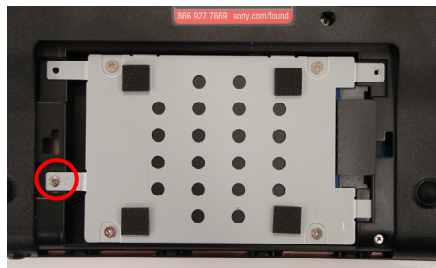
### **Hard Drive Removal** **(Steps 3-7)**

**Step 3.** Using the enclosed magnetic screwdriver, remove the two (2) screws securing the Hard Drive Door.

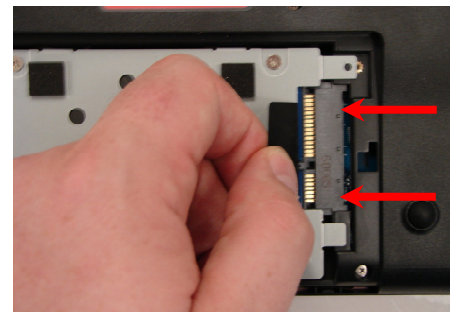
**Put aside the Hard Drive Door Screws to re-secure the Hard Drive Door later in the procedure.**



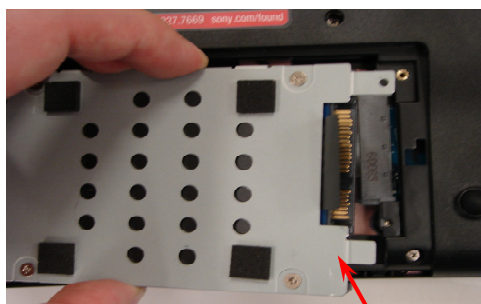
**Step 4.** Grasp the top of the Hard Drive Door with your fingers and slide in a downward motion to remove the door.



**Step 5.** Using the enclosed magnetic screwdriver, remove the screw securing the Hard Drive Assembly. **Put aside the Hard Drive Screw to re-secure the Hard Drive later in the procedure.**

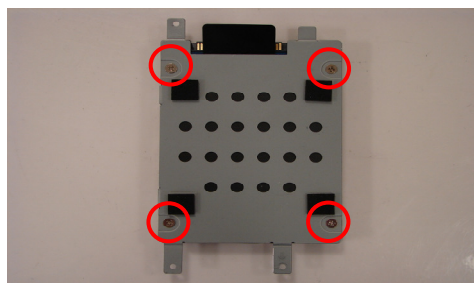


**Step 6.** Disconnect the Hard Drive by pulling the black plastic tab to the Left.



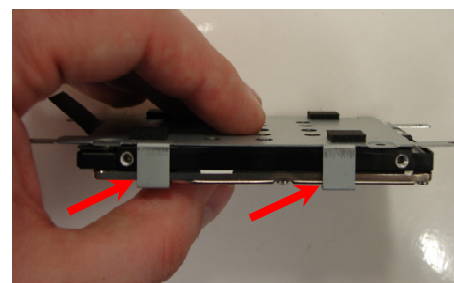
Lift To Remove

**Step 7.** Carefully lift the Hard Drive straight up from the unit to remove.

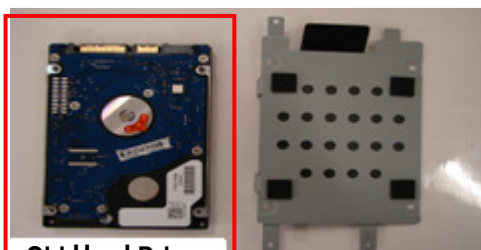


### **Hard Drive Disassembly (Steps 8-13)**

**Step 8.** Remove the four (4) screws that secure the Bracket to the Hard Drive. **Put aside the Bracket Screws to secure the Bracket to the Hard Drive later in the procedure.**

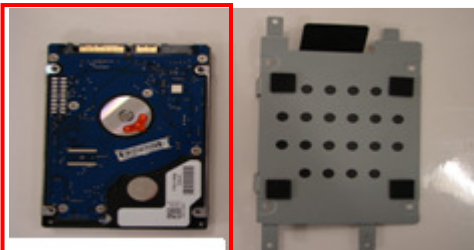


**Step 9.** Locate the clips on the side of the Hard Drive. Slide the Hard Drive away from the clips to remove it from the Bracket.



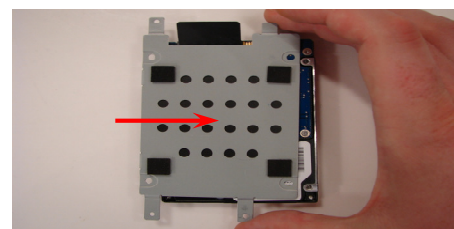
**Old Hard Drive**

**Step 10.** Set the Old Hard Drive aside.

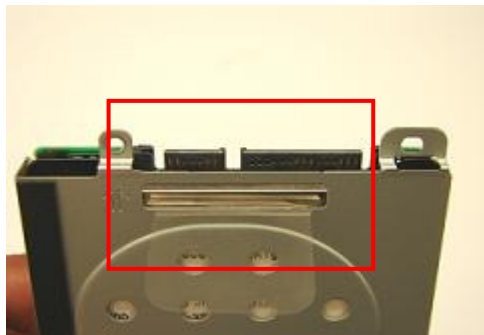


**New Hard Drive**

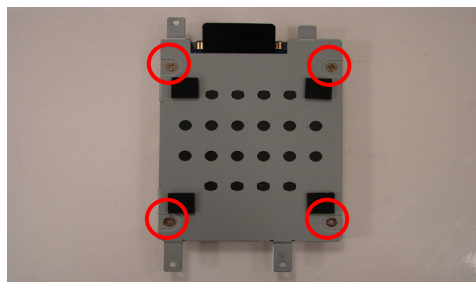
**Step 11.** Prepare the New Hard Drive for assembly.



**Step 12.** Place the Bracket over the New Hard Drive and slide Right, making sure the clips slide over the Hard Drive.

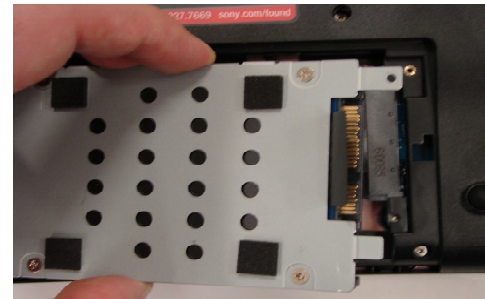


**! NOTE!** Proper mounting of the Hard Drive bracket can be verified with the Hard Drive Connectors appearing below the Plastic Pull Tab.

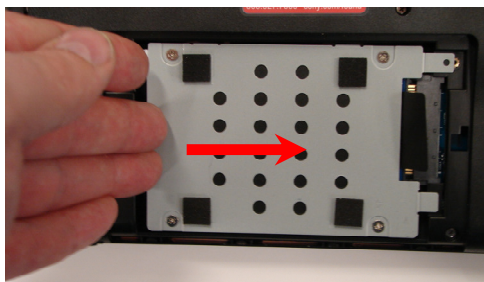


### Hard Drive Reinstallation (Steps 13-18)

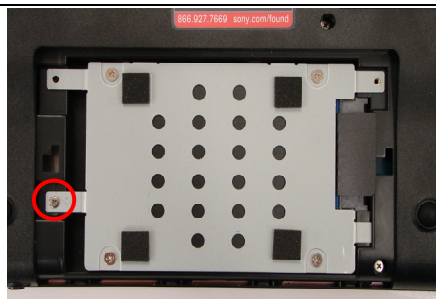
**Step 13.** Re-install the four (4) Hard Drive Bracket screws to secure the Hard Drive Bracket to the New Hard Drive.



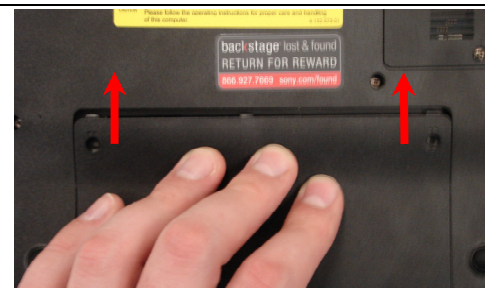
**Step 14.** Insert the Hard Drive Assembly into the Hard Drive Bay. **Note: Hold the Hard Drive on the sides to avoid damage.**



**Step 15.** Install the Hard Drive by sliding the assembly to the right. **Make sure the screw holes are aligned correctly.**

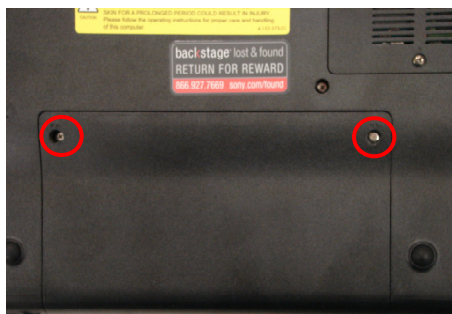


**Step 16.** Re-install the Hard Drive screw holding the Hard Drive assembly in place.



**Step 17.** Re-attach the Hard Drive Door by sliding upward. Verify that the Door is flush with the Bottom Housing.

**Step 18.** Re-install the two (2) Hard Drive Door Screws to secure the Door.



**Step 19.** Re-install the battery pack and reconnect the AC Adaptor.

Power on your computer and continue with the recovery process by following the instructions described on the back of the recovery disk's case.

**Return the old Hard Drive to Sony using the included shipping instructions.**